



# DEEZEE®

*The Quality Truck Accessory People*

## PRODUCT CATALOG





## SIDE STEPS

- 4** HEX SERIES SIDE STEPS  
HEX SERIES CAST STEPS  
BED ACCESS STEP  
6" SIDE STEP
- 6** MOLDED SIDE STEP  
LOUVERED SIDE STEP  
3" & 4" NERF BARS  
BRITE-TREAD RUNNING BOARD
- 5** Nxt/NXc RUNNING BOARDS  
ROUGH STEP  
REAR TRANSIT ROUGH STEP
- 7** SERRATED HITCH STEP  
SIDE BOX STEP  
BUMPER STEP



## JEEP PRODUCTS

- 8** JL FULL ROOF RACK  
FREEDOM ROOF RACK
- 9** SOLID CARGO RACK  
REAR CARGO RACK  
REAR DOOR WORK BENCH  
SPARE TIRE ACCESSORY MOUNT
- 10** JEEP CARGO BOXES  
LOUVERED SIDE STEPS  
HEX SERIES SIDE STEPS
- 11** A-PILLAR LIGHT MOUNT  
HOOD COWL LIGHT MOUNTS  
CARGO SLIDES
- 12** FRONT & REAR DOORS  
JK GRAB HANDLE  
DOOR HANGERS  
WINDSHIELD LIGHT MOUNT
- 13** LIGHT MOUNTS



## BRONCO ACCESSORIES

- 14** REAR WINDOW MOLLE PANEL  
FENDER DELETE
- 15** A-PILLAR LIGHT BRACKET  
FENDER SIGHT BRACKET  
FENDER SIGHT DELETE KIT  
DASH ACCESSORY MOUNT  
HINGE COVERS  
DOOR CARGO POCKET
- 16** REAR DOOR WORK BENCH  
REAR CARGO RACK BRACKET  
CARGO SLIDE



## TRUCK RACKS

- 17** PLATFORM CARGO RACKS  
HITCH PLATFORM RACK
- 18** ALUMINUM CAB RACKS  
HEX SERIES TRUCK RACK  
INVIS-A-RACK
- 20** HALF LADDER RACK  
LOUVERED SPORT BAR  
LIGHT MOUNTS  
TIE DOWNS



## OVERLAND KIT & HEX RAILS

- 22** ALUMINUM CAB RACKS  
OVERLAND SIDE RAILS  
OVERLAND TOP RAILS  
OVERLAND MOLLE PANELS
- 23** HEX SERIES SIDE RAILS  
HEX SERIES CROSS RAILS  
UNIVERSAL CROSS RAILS  
HEX SERIES IN-BED RAILS



## VEHICLE ACCESSORIES

- 24** TRUCK BED TIE-DOWNS  
HEX SERIES TIE-DOWNS  
STAINLESS STEEL SIDE RAILS  
SIDE BED CAPS
- 25** HEAVY DUTY BED MATS  
TAILGATE MAT  
TAILGATE PROTECTORS
- 26** TAILGATE ASSIST  
GATE GUARDIAN
- 27** TAILGATE BOARD  
UNDER SEAT STORAGE DRAWER
- 28** MUD FLAPS  
LICENSE PLATE MOUNT
- 29** FLOOR MATS  
DITCH LIGHT MOUNTS



## TOOL BOXES

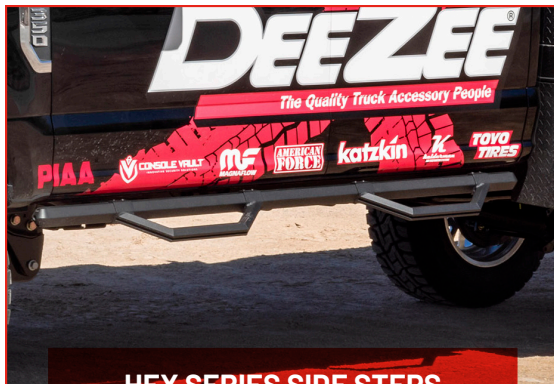
- 30** PLATINUM TOOL BOX  
BLUE LABEL TOOL BOXES
- 31** RED LABEL TOOL BOXES  
STEEL TOOL BOXES
- 32** POLY CROSSOVER TOOL BOX  
POLY TRAILER TRIANGLE BOX
- 33** SMALL POLY CHEST  
LARGE POLY CHEST  
POLY WHEEL WELL TOOL BOX
- 34** 5 DRAWER WHEEL WELL BOX  
ALUMINUM WHEEL WELL BOX  
TRIANGLE TRAILER BOX  
NARROW TOOL BOXES
- 35** ATV TOOL BOXES  
TOPSIDER TOOL BOXES  
UNDERBED TOOL BOXES  
UNDERBED MOUNTING BRACKETS
- 36** ACCESSORIES & REPLACEMENT PARTS



## TRANSFER TANKS

- 42** TRANSFER TANKS  
AUXILIARY TANKS  
COMBO TANKS  
COMBO TANK + PUMP
- 43** GAS CAPS  
AUX CONNECTOR KITS  
BUILD YOUR OWN COMBO





**HEX SERIES SIDE STEPS**

- Made of extruded aluminum and completed with a protective powder coat to stop corrosion in its tracks
- Integrated channel design allows you to adjust the position of the drop steps for customized placement
- Available in Textured Black or Gloss Black
- Custom bracket kits **(sold separately)**



**HEX SERIES CAST STEP**

- Enclosed cast step design adds style and a larger step surface
- Integrated channel design allows you to adjust the position of the drop steps for customized placement
- Available in a Textured Black powder coat finish
- Custom bracket kits **(sold separately)**



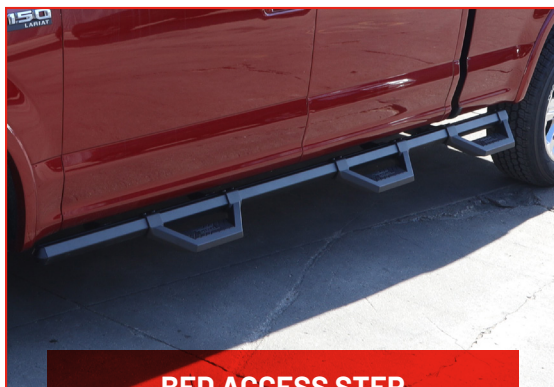
**NXt RUNNING BOARDS**

- Slip resistant rubber grommets line the 6" wide step area
- Available in black with black trim or black with chrome trim
- Regular Cab = 51" (1.3m), Extended Cab = 73" (1.85m), or Crew Cab = 86" (2.2m)
- Custom bracket kits **(sold separately)**



**NXc RUNNING BOARDS**

- Slip resistant rubber grommets line the 5" wide step area
- Available in black with black trim, black with chrome trim, or stainless with black trim
- Full-length aluminum protective accent trim
- Standard = 71.5" (1.82m)
- Custom bracket kits **(sold separately)**



**BED ACCESS STEP**

- Features three aluminum cast steps on each side
- Gives you a boost up to access the bed of your truck from in front of your rear wheel well
- Available in a textured black powder coat finish
- Utilizes Hex Series extrusion for preferred placement of each cast step
- Custom bracket kits **(sold separately)**



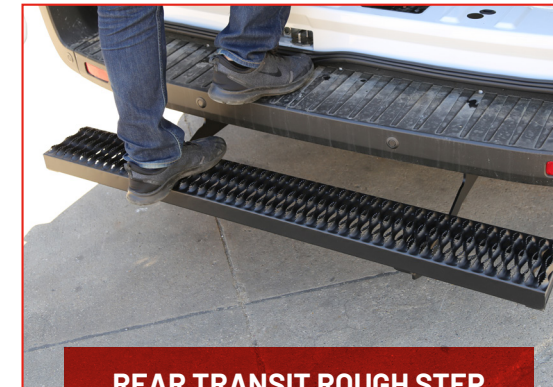
**6" SIDE STEP**

- Constructed from tough, 16-gauge steel for a sleek clean look or Brite-Tread aluminum for more of a rugged off-road look
- Available in polished stainless steel, Brite-Tread aluminum, or with a textured black powder coat finish
- Molded plastic end caps and step pads
- Custom bracket kits **(sold separately)**



**ROUGH STEP**

- Aluminum or Steel construction protected by NRT™ powder coating
- Grated step surface allows dirt and debris to fall through and avoid build up
- Regular Cab = 51" (1.3m), Extended Cab = 73" (1.85m), or Crew Cab = 86" (2.2m)
- Custom bracket kits **(sold separately)**



**REAR TRANSIT ROUGH STEP**

- Aluminum construction protected by NRT™ powder coating
- Grated step surface allows dirt and debris to fall through and avoid build up
- Custom fit bracket kit included





MOLDED SIDE STEP

- Textured poly plastic construction
- Reinforced steel underneath to ensure a sturdy step up
- Extended Cab = 73" (1.85m), or Crew Cab = 86" (2.2m)
- Custom bracket kits **(sold separately)**



LOUVERED SIDE STEP

- Made of heavy-duty steel with fully welded ends
- Allows water and debris to drain through the board and keep the step area clear and slip free
- NRT™ textured black powder coat finish
- Extended Cab = 73" (1.85m), or Crew Cab = 86" (2.2m)
- Custom bracket kits **(sold separately)**



3" ROUND & 4" OVAL NERF BARS

- Constructed from tough, 14-gauge 304 stainless steel material or tough, black 14-gauge mild steel
- Molded plastic step pads at each door to ensure secure footing on the step area



**\*Custom-fit bracket kit for most applications ensures quick and easy installation Sold Separately**



BRITE-TREAD RUNNING BOARDS

- The classic style that started it all for Dee Zee
- Non-rusting Brite-Tread aluminum construction with front mud flap
- No drill, custom-fit bracing tucks under the vehicle to create a sleek look



SERRATED HITCH STEP

- Constructed of heavy duty steel finished with a textured black NRT™ powder coat finish
- Rugged grated surface to ensure a safe step up
- Built in bottle opener and 10mm & 13mm hex wrenches
- Installs into 2" trailer hitches **(hitch pin included)**



SIDE BOX STEP

- Gain access to the front of your truck bed or toolbox
- Cast aluminum step with non-slip surface attaches to the frame of your truck
- Black powder coat finish
- Mount using existing factory holes in front of your rear wheel
- 300lb. Capacity • Driver side only



BUMPER STEP

- Cast aluminum step with non-slip surface attaches to the frame of your truck
- Black powder coat finish
- Mount using existing factory holes below the bumper
- 300lb. Capacity • Driver side only

MAKE/MODEL	YEARS	SIDE BOX STEP - 6.5' BEDS	BUMPER STEP
SILVERADO / SIERRA 1500	22 - 19	DZ6211F6	DZ6202S
	18 - 14	DZ6202F6	DZ6202S
SILVERADO / SIERRA HD 2500/3500	22 - 20	-	DZ6211S
	19 - 15	DZ6202F6	DZ6202S
DODGE RAM 1500	22 - 19	DZ6207F6	DZ6207S
	18 - 10	DZ6203F6	DZ6203S
DODGE RAM 2500/3500	22 - 20	DZ6207F6	DZ6207S
	19 - 10	DZ6203F6	DZ6203S
FORD F150	22 - 15	DZ6204F6	DZ6204S
FORD SUPER DUTY	22 - 16	DZ6205F6	DZ6205S
NISSAN TITAN	22 - 19	-	DZ6208S
TOYOTA TUNDRA	21 - 19	-	DZ6209S
TOYOTA TACOMA	22 - 16	-	DZ6210S

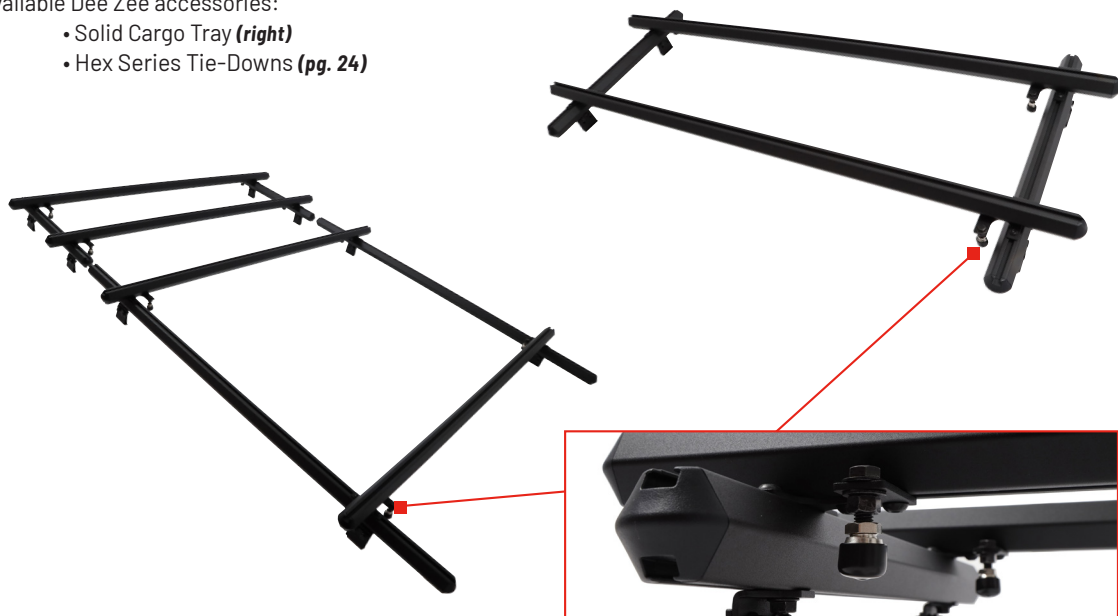




DZ4472JL

### JL FULL ROOF RACK

- Maximize the functionality of your Wrangler JL
- Full roof rack kit includes a 24" rack to cover the front doors AND a 60" rack that covers the backseat and cargo area
- Tested weight capacity:
  - 24" rack: 200 lb. (static & dynamic)
  - 60" rack: 600 lb. (static) | 225 lb. (dynamic)
- Cross-bars can be moved forward and backwards in the aluminum hex extrusion to mount accessories
- Adjustable extrusions make the roof rack ideal for tents, canoes, bikes, or travel
- Installs easily into existing drip rails
- Rubber bumpers leave roof scratch free and provide additional stability
- Available Dee Zee accessories:
  - Solid Cargo Tray (**right**)
  - Hex Series Tie-Downs (**pg. 24**)



DZ4463JP

### FREEDOM TOP RACK

- 24" rack covers the front or rear doors of your JK/JL Wrangler or Gladiator
- Add another to cover both front AND rear doors
- Installs easily into existing drip rails
- 200 lb. tested weight capacity (**static & dynamic**)
- Cross-bars can be moved forward and backwards in the aluminum hex extrusion to mount accessories
- Rubber bumpers leave roof scratch free and provide additional stability
- Available Dee Zee accessories:
  - Solid Cargo Tray (**right**)
  - Hex Series Tie-Downs (**pg. 24**)



DZ4470JP

### SOLID CARGO TRAY

- Great for mounting to roof racks for additional storage space
- Made of durable steel and finished with NRT™ (**No Rust Technology**) texture black powder coat
- Custom bracket kit mounts in rear cargo area using existing factory holes. (**sold separately**)
- No drilling or cutting required



DZ4471JP

### REAR CARGO TRAY

- Made of durable steel and finished with NRT™ (**No Rust Technology**) texture black powder coat
- Features a two-piece bolt together design
- The shelf slides along Hex channel rails to reach cargo easier
- Slide the shelf out for full access to the cargo area
- Comes with two hex series tie downs
- Custom bracket kit for JK & JL models (**sold separately**)



DZ4469JL

### REAR DOOR WORK BENCH

- Add sleek storage that folds when not in use
- Constructed of 14-gauge steel with a texture black coat for long lasting protection
- MOLLE panel design for increased functionality
- Maximum weight limit of 75 lbs.
- No drill installation using factory holes



DZ95040TB

### SPARE TIRE ACCESSORY MOUNT

- An easy way to add accessories to your spare tire
- Fits any vehicle with a rear mounted spare tire
- Elevated MOLLE panel design to secure items
- Steel construction topped with a textured black NRT™ powder coat
- Secured by any strap up to 3" wide (**not included**)





L: 36" W: 17" H: 13"  
 • Fits 2 door and 4 door models

### CARGO BOXES

- Lockable storage for Wrangler JK or JL
- Non-rusting .056 brite-tread aluminum with a texture black powder coat finish
- Pivoting design provides access to lower storage compartment without removing the box
- Thumb bolt secures the box to the floor and can only be accessed inside the tool box
- Water resistant foam gasket around the lid
- No-drill installation using factory holes

L: 37" W: 31" H: 13"  
 • Fits 4 door models Only  
 • Angled front avoids interference with the rear door



- Made of heavy duty 16-gauge steel
- Louvers allow mud, water, and debris pass through the step surface
- 6" wide step area
- Custom bracket kits **(sold separately)**

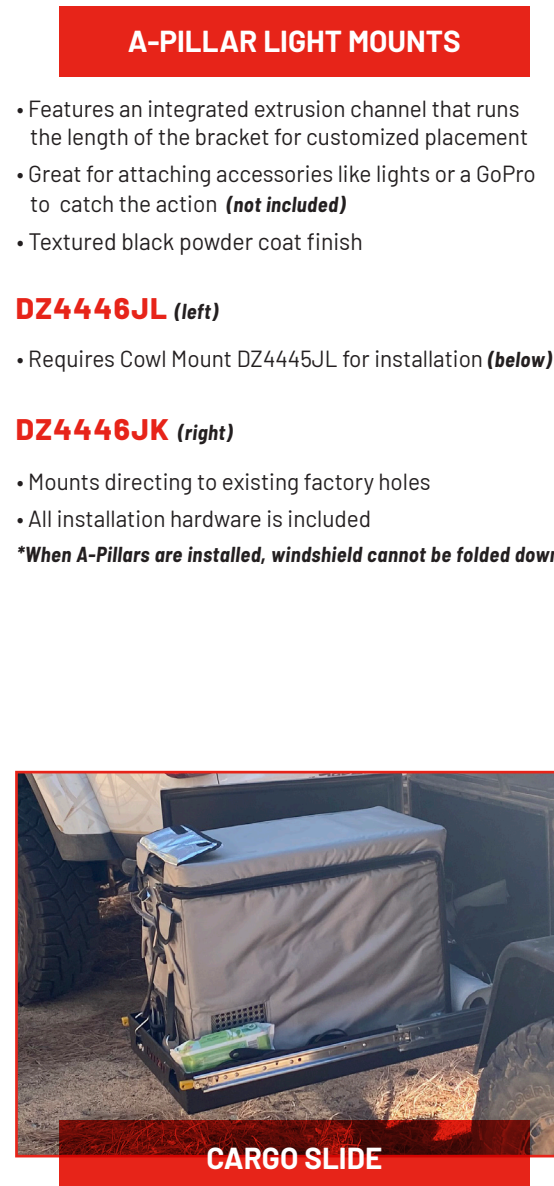


- Made from extruded aluminum and three powder coat finish options\*
  - Integrated channel design allows you to adjust the position of the steps for customized placement
  - No drilling required for installation custom brackets **(sold separately)**
  - Available in hoop step style or cast plate for a larger step surface
- \*Cast step available in texture black only**



- Utilizes factory mounting locations
- Custom fit applications for no-drill installation **(hardware included)**
- Heavy duty steel construction with texture black powder coat finish
- Compatible with A-Pillars **(above)** and Cube Light Brackets **(pg. 13) (sold separately)**

**DZ4445JK (not pictured)**



- Access hard to reach cargo with pull out slides
- Sized to fit common travel refrigerators
- 5 configurations are available **see page 16 for options**
- Slides lock securely in place when not in use and automatic stop at full extension
- Mounts to existing factory bolts with a slotted design
- Constructed of heavy duty steel with a protective NRT™ powder coat finish

### A-PILLAR LIGHT MOUNTS

- Features an integrated extrusion channel that runs the length of the bracket for customized placement
- Great for attaching accessories like lights or a GoPro to catch the action **(not included)**
- Textured black powder coat finish

**DZ4446JL (left)**

- Requires Cowl Mount DZ4445JL for installation **(below)**

**DZ4446JK (right)**

- Mounts directing to existing factory holes
- All installation hardware is included

**\*When A-Pillars are installed, windshield cannot be folded down**

**When A-Pillars, Cowl/Light Mounts are Installed, Jeep Windshield Cannot Be Folded Down**





**DZ4454JL**

## FRONT & REAR DOORS

- Constructed of lightweight extruded aluminum
- Installs in seconds over OEM door pin (includes cap)
- Full length welds with texture black powder coat finish
- Interior door latch for a sleek exterior design
- Door latches meet FMVSS204 requirements for Original Equipment Automotive latches
- Contours to the existing door frame
- Sold as a set of 4
- Fits Wrangler JL and Gladiator



## GARAGE DOOR HANGER

**DZ4460JP**

- Store your factory doors in your garage when they're not in use.



## JK INTERIOR GRAB HANDLE

### FRONT HANDLES

**DZ4450JKF**

*(Sold in pairs)*

### REAR HANDLES

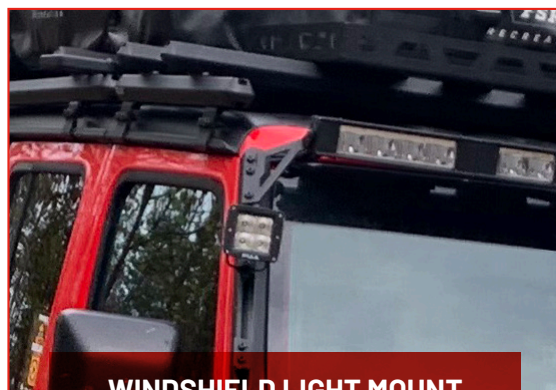
**DZ4450JKR**

*(Sold in pairs)*

- Grab a boost with a custom fit handle
- Mounts using existing factory holes
- Fits 2007-2018 Wrangler JK models

#### OTHER OPTIONS

*Need a grab handle somewhere else? Wherever there's a hex channel you can mount a handle!*



## WINDSHIELD LIGHT MOUNT

*Light Bar Width Limitations JK & JL/Gladiator: 50.5"*

**DZ4462JK** - Requires DZ4446JK to install

**DZ4462JL** *(above)*

- Requires 4445JL & 4446JL to install
- Also mounts to Gladiator
- Made of heavy duty steel with a texture black powder coat finish.
- No drill installation - hardware included

*\* Lights not included*



**DZ4445JL**

## DOUBLE LIGHT MOUNT

- Made of heavy duty steel with texture black NRT™ powder coat finish
- No drill mounting using existing bolt locations on your Jeep
- Several mounting locations and configurations available

*\* Lights not included*



**DZ4452JL**

## SINGLE LIGHT MOUNT



**DZ4453JL**

## DOUBLE LIGHT MOUNT



**DZ4456JP**

## HOOD LIGHT MOUNT

*Light Bar Width Limitations*

*JK: 22.5" • 32.75"*

*JL/Gladiator: 30.125" • 40.25"*

- Mounts directly into hinges

*\* Lights not included*



## A-PILLAR CUBE LIGHT MOUNTS

- Must have A-Pillars to mount (*pg. 11*)
- Slide mount anywhere along the A-Pillar channel for customizable placement

**SINGLE LIGHT MOUNT** *(above)*

**DZ4451JL**

**SINGLE LIGHT MOUNT**

**DZ4451JL**

*\* Lights not included*

*\*\*When A-Pillars and Cowl Light Mounts are installed, windshield cannot be folded down*



# BRONCO ACCESSORIES



- Made of heavy duty 14 gauge steel
- Mounts easily with existing factory bolts
- Provides a convenient/modular mounting surface
- NRT™ black powder coat is a specially designed to increase corrosion protection
- No drilling required for easy installation
- Limited-lifetime warranty



- Constructed of HDPE plastic
- Installation hardware included
- Sold in sets of 4



- Heavy duty steel construction
- Protective black powder coat finish
- No drill installation



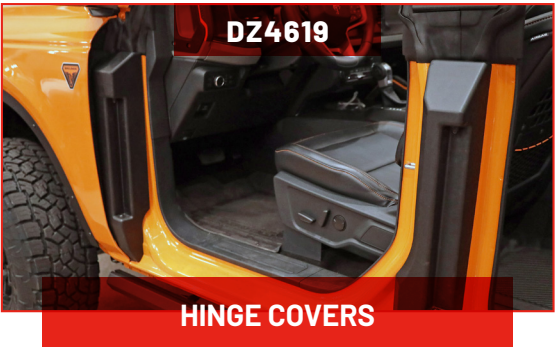
- Heavy duty steel construction
- Protective black powder coat finish
- Mount lights and other accessories
- No drill installation



- Made of die-cast aluminum
- Coated with protective powder coat finish
- Installs into existing factory points
- Hardware included



- Add a channel to the dash for mounting
- Installs into factory mounting points
- No drill installation
- Safely mount accessories



- Made of formed plastic
  - Creates a sleek look while adding protection for the wiring harness and door hinge posts
  - Sold as a set of 4
- patent pending*



- Add functional storage to the inside of the doors
- Made of therma-formed plastic
- Holds a full size water bottle
- Second storage space for other items





REAR DOOR WORK BENCH

- Constructed of 14-gauge steel
- Folds up out of the way when not in use
- MOLLE panel design for increased functionality
- Protected with texture black powder coat
- Maximum weight limit of 75lbs.
- No drilling required for easy installation
- Limited-lifetime warranty



REAR CARGO RACK BRACKET

- When used as rear storage it will only fit 4 door models
- Made of durable steel
- Protected with texture black powder coat
- Removable when not in use
- No drilling required for easy installation
- Limited-lifetime warranty



PLATFORM ROOF RACK

- Extruded aluminum extrusions
- Texture black powder coat finish
- Die cast aluminum corners
- Custom brackets to eliminate drilling
- Base platform allows for various configurations
- Add stanchions and risers to customize the rack
- Add Hex Series tie downs to provide an anchor point anywhere in the channel to secure cargo



CARGO SLIDE

- Access hard to reach cargo with pull out slides
- Universal fit for rear cargo area, trucks, or garages
- Sized to fit common travel refrigerators
- 5 configurations are available
- Slides lock securely in place when not in use and automatic stop at full extension
- Mounts to existing factory bolts with a slotted design
- Constructed of heavy duty steel with a protective NRT™ powder coat finish



CARGO SLIDE OPTIONS

36" base platform	DZ48800
18" base platform	DZ48801
36" cargo slide <b>requires base</b>	DZ48810
18" cargo slide <b>requires base</b>	DZ48811
16" solid HDPE panel	DZ48812



PLATFORM CARGO RACK

- Extruded aluminum extrusions
- Texture black powder coat finish
- Die cast aluminum corners
- Add tie downs anywhere along the rail to secure cargo
- Easily removed when not in use
- Fits standard 2" hitch receivers
- Hitch pin included
- 49"x27" or 65"x27"







**CURVED ALUMINUM CAB RACKS**

- Integrated channel system offers many accessory possibilities
- Two cast aluminum tie-downs included
- 2.5" hexagonal aluminum tubing
- Bolt-on mounting feet install into existing stake pocket holes
- Heavy-duty ultra mesh **(front)** or open frame **(rear)**
- Use 2 racks to transport longer items such as ladders, lumber, piping, and canoes



**ANGLED ALUMINUM CAB RACKS**

**\*Warehouse Distributor Exclusive\***

- Integrated channel system offers many accessory possibilities **(right)**
- Welded mounting feet install into existing stake pocket holes
- 2.5" hexagonal aluminum tubing
- Heavy-duty ultra mesh **(front)** or open frame **(rear)**
- Use 2 racks to transport longer items



**HEX SERIES TRUCK RACK**

- Integrated channels allow for adjusting the bars vertically for perfect placement
- Made from extruded hexagonal aluminum
- No-drill installation into existing stake pocket holes
- Durable, plastic end-caps
- Includes six bolts for mounting personalized accessories: **lights/tie-downs not included**
- 300 lb. weight limit



**INVIS-A-RACK**

**Invisible to Invaluable...IN SECONDS!**

- Innovative cargo rack system
- Uprights hide away when not in use and pop-up in seconds for use with ladders, kayaks, and more!
- Lightweight, aluminum construction with a textured black powder coat finish
- Installs easily without drilling
- 500 lb. capacity



**DZ95053**

**HALF LADDER RACK**

- Heavy-duty 1/8" thick steel tubing
- Gloss black powder-coated finish
- Hook and loop straps and ladder stop included
- Adjustable height and width
- Bolt-on installation • drilling required
- Rated for 200 lb. weight capacity per set (2)
- Width: 23" x Height: 52.5"



**LOUVERED SPORT BAR**

- Made of heavy-duty steel tubing with a textured black powder-coat
- Louvered side panels give an aggressive off-road look
- No-drill installation into the bed's stake pocket holes
- Easily add auxiliary lights in the top track
- **\*Lights not included**
- Built-in third brake light **wiring included**



**LIGHT MOUNTS**

**DZ95063** Extra Large

**DZ95062** Large

**DZ95064** Side Mount (above)

- Black NRT™ powder-coated steel
- Sold individually

**\* Lights not included**



**DZ95002**

**TIE-DOWNS**

- Cast-aluminum construction
- Add anchor points to the integrated channels on Dee Zee Cab Racks
- Set of two



ALUMINUM CAB RACKS								
MAKE / MODEL	YEARS	SILVER MESH PART # (FRONT)	GLOSS BLACK MESH PART # (FRONT)		TEXTURED BLACK MESH PART # (FRONT)	SILVER NO MESH PART # (REAR)	GLOSS BLACK NO MESH PART # (REAR)	TEXTURED BLACK NO MESH PART # (REAR)
GM SILVERADO/SIERRA	2022-1973	DZ95050R	DZ95050RB		DZ95050RTB	DZ95054R	DZ95054RB	DZ95054RTB
GM COLORADO/CANYON	2022-2015	DZ95070R	DZ95070RB		DZ95070RTB	DZ95071R	DZ95071RB	DZ95071RTB
DODGE RAM 1500	2022-2019	DZ95050R	DZ95050RB		DZ95050RTB	-	-	-
	2018-2009	DZ95050R	DZ95050RB		DZ95050RTB	DZ95054R	DZ95054RB	DZ95054RTB
DODGE RAM 2500/3500	2022-2013	DZ95058R	DZ95058RB		DZ95058RTB	DZ95054R	DZ95054RB	DZ95054RTB
	2012-2010	DZ95057R	DZ95057RB		DZ95057RTB	DZ95054R	DZ95054RB	DZ95054RTB
FORD F-150	2022-1973	DZ95050R	DZ95050RB		DZ95050RTB	DZ95054R	DZ95054RB	DZ95054RTB
FORD SUPER DUTY	2022-2017	DZ95072R	DZ95072RB		DZ95072RTB	DZ95073R	DZ95073RB	DZ95073RTB
	2016-1999	DZ95050WR	DZ95050WRB		DZ95050WRTB	DZ95054WR	DZ95054WRB	DZ95054WRTB
FORD RANGER	2022-2019	DZ95070R	DZ95070RB		DZ95070RTB	DZ95071R	DZ95071RB	DZ95071RTB
JEEP GLADIATOR	2022-2019	DZ95070R	DZ95070RB		DZ95070RTB	DZ95071R	DZ95071RB	DZ95071RTB
TOYOTA TUNDRA	2021-2007	DZ95050R	DZ95050RB		DZ95050RTB	-	-	-
TOYOTA TACOMA	2022-2016	DZ95070R	DZ95070RB		DZ95070RTB	DZ95071R	DZ95071RB	DZ95071RTB

WELDED CAB RACKS			
MAKE / MODEL	YEARS	TEXTURED BLACK MESH PART # (FRONT)	TEXTURED BLACK NO MESH PART # (REAR)
GM SILVERADO/SIERRA	2022-1973	DZ95090TB	DZ95094TB
GM COLORADO/CANYON	2022-2015	DZ95091TB	DZ95095TB
DODGE RAM 1500	2022-2019	DZ95090TB	-
	2018-2009	DZ95090TB	DZ95094TB
DODGE RAM 2500/3500	2022-2013	DZ95098TB	DZ95094TB
	2012-2010	-	DZ95094TB
FORD F-150	2022-1973	DZ95090TB	DZ95094TB
FORD SUPER DUTY	2022-2017	DZ95092TB	DZ95093TB
FORD RANGER	2022-2019	DZ95091TB	DZ95095TB
JEEP GLADIATOR	2022-2019	DZ95091TB	DZ95095TB
TOYOTA TUNDRA	2021-2007	DZ95090TB	-
TOYOTA TACOMA	2022-2016	DZ95091TB	DZ95095TB

INVIS-A-RACK	
FULL-SIZE TRUCKS*	
5.5’ Beds	DZ951550
6’ & 6.5’ Beds	DZ951600
8’ Beds	DZ951800

HEX CAB RACKS		
MAKE / MODEL	YEARS	TEXTURED BLACK
CHEVY SILVERADO / GMC SIERRA	2022-2007	DZ95250TB
DODGE RAM 1500	2022-2009	DZ95251TB
DODGE RAM 2500/3500	2022-2010	DZ95251TB
FORD F150	2022-2015	DZ95252TB
FORD SUPER DUTY	2022-2016	DZ95253TB

LOUVERED SPORT BAR		
MAKE / MODEL	YEARS	SPORT BAR
GM SILVERADO/SIERRA	2022-1999	DZ960050B
DODGE RAM 1500	2018-2002	DZ960051B
DODGE RAM 2500 / 3500	2019-2003	DZ960051B
FORD F-150	2022-2009	DZ960050B
FORD SUPER DUTY	2022-2008	DZ960052B
NISSAN TITAN	2018-2017	DZ960050B
TOYOTA TUNDRA	2016-2007	DZ960050B





**START HERE**

### ALUMINUM CAB RACKS

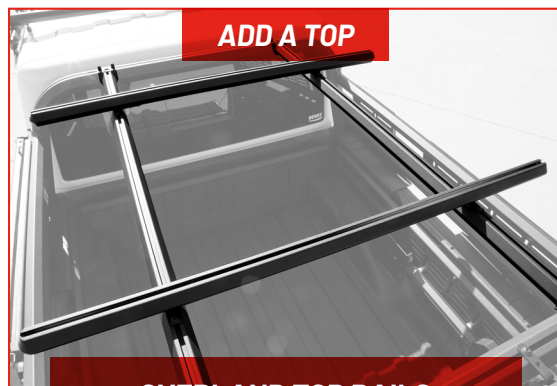
- Fits mid-size and full size trucks
- Use 2 Dee Zee Cab Racks as a base
  - 1 protective mesh front rack
  - 1 open rear rack
- Select from:
  - CURVED TOP: **Pg. 18**
  - ANGULAR TOP: **Pg. 18**



**TIE IT TOGETHER**

### OVERLAND SIDE RAILS

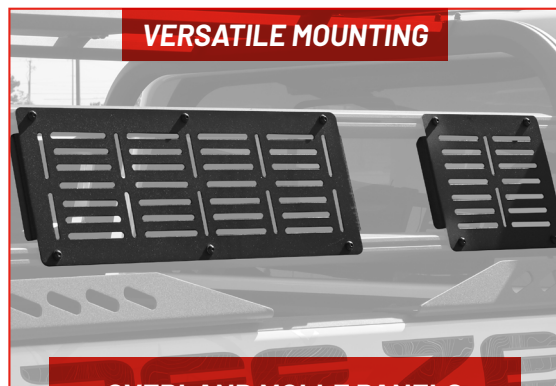
- DZ95011TB** 5.5' full size
- DZ95012TB** 6.5' full size
- DZ95010TB** Mid-size
- Lightweight, extruded aluminum construction with textured black powder coat
- Adds strength by tying the front/rear racks together
- Includes 4 Side Rails (2 Per Side), such as the Dee Zee Overland MOLLE Panels below



**ADD A TOP**

### OVERLAND TOP RAILS

- DZ95021TB** 5.5' full size
  - DZ95022TB** 6.5' full size
  - DZ95020TB** mid-size
  - Creates a top mounting surface for adding roof top tents, cargo carriers, athletic racks, and more!\*
  - Includes 2 Top Rails & 2 Cross Rails with integrated channels that allow for custom rail placement
- Weight Capacity: 225 lbs. dynamic & 600 lbs. static**



**VERSATILE MOUNTING**

### OVERLAND MOLLE PANELS

- DZ95030TB** 12" wide
- DZ95031TB** 27" wide
- Mounts to Overland Side Rails (**above**) to provide a convenient/modular mounting surface\*\*
- Constructed of 14 gauge steel with a NRT™ textured black powder coat finish



### HEX SERIES SIDE RAILS

- Hexagonal aluminum tubing with built-in channel for endless accessory options
- Cast stanchions mount in your stake pockets without drilling
- Add 3D protection and tie-down points to your truck's bed rail (**pg. 24**) (**sold separately**)
- Capacity Evenly Distributed: 200lbs.



**DZ99780BPT** - Toyota install kit  
**DZ99780BPN** - Nissan install kit

### UNIVERSAL CROSS RAILS

- DZ99780TB** Mid-Size **DZ99781TB** Full-Size
- Universal design installs under the lip of most truck beds
- Textured black extruded aluminum construction featuring a full-length integrated accessory channel
- Hole pattern in the stanchions provide further customization options:
  - Add Tie-Down Anchors #DZ97903 (**pg. 24**)
  - Add Hex Series Side Rails
- Capacity: Dynamic: 225lbs. & Static: 600lbs.



**#DZ99799TB**

*\*Side Rails Sold Separately & Required for Installation\**

### HEX SERIES CROSS RAILS

- Installs onto Dee Zee Hex Series Side Rails (**sold separately**) (**above**)
- Full-length integrated channel design provides endless accessory possibilities such as roof top tents, recreational racks, and more!\*
- Extruded aluminum construction protected by a textured black powder coat finish
- Cross bars can slide back & forth along the entire Side Rail channel for ideal placement
- Capacity: Dynamic: 200lbs. & Static: 600lbs.



*\*Accessories not included*

### HEX SERIES IN-BED RAILS

- Installs into existing bed mounting points in RAMs and Jeep Gladiators
  - Full-length integrated channel for mounting accessories\*:
    - Tie-Down Anchors #DZ99700TB (**pg. 24**)
    - MOLLE Panels (**pg. 22**)
- \*Dodge applications require Dee Zee Truck Bed Tie-Downs to Install #DZ97913 • x3 Sets \***

*\*Sold Separately*

*\*\*Cab Racks and Side Rails Sold Separately & Required for Installation*





TRUCK BED TIE DOWNS

- An easy way to add tie-down points for securing cargo
- Rated for up to 250 lbs
- No-drill installation into existing bed mounting points
- Made from cast aluminum
- Available for Silverado, Sierra, Colorado, Canyon, F-150, Super Duty, Ranger, and RAM.



DZ99700TB  
HEX SERIES TIE-DOWNS

- Add convenient anchor points to the integrated channels on Dee Zee Hex Series Products:
  - Truck Racks (pg. 18)
  - Side Rails (pg. 23)
  - Cross Rails (pg. 23)
  - Jeep Roof Racks (pg. 8)
  - Overlanding Racks (pg. 22)
- Slide and Lock Design
- Rated for 200 lbs.



STAINLESS STEEL SIDE RAILS

- Polished stainless steel construction
- Custom length applications install into stake pocket holes
- Thick, 1.9" diameter
- No-drill installation on full-size applications
- Mid-size trucks require drilling for installation



SIDE BED CAPS

- Brite-Tread aluminum construction, also available with gloss black powder coat
- Custom-fit applications
- Fits perfectly over factory plastic\*
- 2 Styles available: Standard with no holes or with a take pocket holes
- *\*Tailgate Protectors and Side Bed Caps cannot be installed if factory plastic has been removed*



HEAVY DUTY BED MATS

- Prevent cargo from shifting and damaging your bed
- Rubber cleats help hold the mat in place & allow water to drain
- Resists most chemical and oil spills
- Custom-fit applications contour wheel wells
- 3/8" (9.52mm) thick, tear-resistant rubber construction
- Universal utility mats also available

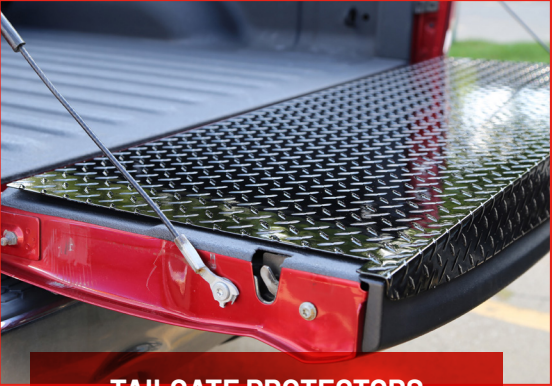
*\*More applications available\**



DZ86700  
TAILGATE MAT

- Universal width fits most full-size pickups
- 60" x 19.5" • some trimming may be required
- Extra thick, 3/8" cord-enhanced rubber
- Can be trimmed to fit mid-size trucks
- Mounting hardware included
- Drilling required for installation

BED MAT APPLICATIONS		Part #
Silverado/Sierra 1500		
22 - 19	5.5' Bed	DZ87019
	6.5' Bed	DZ87020
Silverado/Sierra 2500/3500		
22 - 20	6.5' Bed	DZ87022
	8' Bed	DZ87021
Ram Pickup 1500 model		
22 - 19	5.5' Bed	DZ87015
	6' Bed	DZ87016
Ram 2500/3500		
22 - 03	5.5' Bed	DZ86996
	6' Bed	DZ86917
F150 Pickup (1997+)		
22 - 15	5.5' Bed	DZ87005
	6.5" Bed	DZ87006
Super Duty Pickup		
22 - 17	6.5' Bed	DZ87011
	8' Bed	DZ87012
Gladiator		
22 - 20		DZ87026
Universal Bed Mat 4' x 8'		DZ85005



TAILGATE PROTECTORS

- 2 Styles available:
  - Standard Tailgate Cap
  - Full Tailgate Protector (*above*)
- Brite-Tread aluminum construction, also available with gloss black powder coat
- Custom-fit applications
- Fits perfectly over factory plastic\*
- *\*Tailgate Protectors and Side Bed Caps cannot be installed if factory plastic has been removed*





TAILGATE ASSIST

Safely control the drop rate of your truck's tailgate!

- Custom designed specifically by make/model
- High quality, extensively tested for heavy use
- Works in conjunction with factory cables
- Easy, no-drill installation • installs in minutes
- All hardware included • minimal tools required
- Installs on driver side only • 1 unit per truck

MAKE / MODEL	YEARS	PART #	NOTES
CHEVY/GMC			
SILVERADO/SIERRA 2500/3500 HD	2022-2020	DZ43104	Work Truck Trim Only
	2019-2014	DZ43102	
SILVERADO/SIERRA 1500	2022-2019	DZ43103	Work Truck Trim Only
	2018-2014	DZ43102	
SILVERADO/SIERRA 1500/2500/3500	2013-2007	DZ43102	'07 Classic Only
	2007-1999	DZ43100	
COLORADO/CANYON	2020-2015	DZ43105	
DODGE / RAM			
RAM 1500	2022-2019	DZ43302	New body style
	2022-2009	DZ43301	22 - 19 classic body only
	2008-2002	DZ43300	
RAM 2500/3500	2022-2010	DZ43301	
	2009-2003	DZ43300	
JEEP			
GLADIATOR	2022-2020	DZ43303	
FORD			
F-150	2022-2015	DZ43204	Not Flareside Not Flareside/SuperCrew
	2014-2004	DZ43200	
	2003-1997	DZ43203	
SUPER DUTY	2022-2017	DZ43205	
	2016-1999	DZ43203	
RANGER	2022-2019	DZ43206	
MAVERICK	2022-2021	DZ43207	



GATE GUARDIAN

- Theft deterrent for truck tailgates
- Uses tamper resistant security screw to deter thieves
- Foam liners and wrench included for installation
- Installs on passenger side **not compatible with power tailgates**
- Patent pending design installs in minutes
- Three year limited warranty

TAILGATE PREP BOARD			
CHEVROLET / GMC			
Silverado/Sierra			
22	-	19	1500 DZ284123
22	-	19	1500 multi-function tailgate DZ284123M
21	-	20	2500/3500 DZ284123
19	-	15	2500/3500
Colorado/Canyon			
22	-	15	DZ284124
DODGE / RAM TRUCKS			
Ram Pickup 1500 model (not 60/40 split tailgate)			
22	-	19	DZ284144
FORD			
F150 Pickup (1997+)			
22	-	15	DZ284140
Super Duty Pickup			
22	-	17	DZ284103
Maverick Pickup			
22	-	22	DZ284127
Ranger Pickup			
22	-	19	DZ284126
JEEP			
Gladiator			
22	-	19	DZ284151
Tacoma			
22	-	16	DZ284172
UNDER SEAT STORAGE DRAWER			
CHEVROLET / GMC			
Silverado/Sierra 1500			
22	-	19	DZ700
Silverado/Sierra 2500/3500			
22	-	20	DZ700
FORD			
F150			
22	-	15	DZ701
Super Duty Pickup			
22	-	17	DZ701



TAILGATE BOARD

- Solid work surface screws into existing factory holes
- 1/2" thick HDPE polymer composition
- UV and extreme weather resistant
- Maintenance-free, for easy to clean up
- Excellent impact resistance
- Three year warranty



UNDER SEAT STORAGE DRAWER

- Under seat slide and store for full size Chevy and Ford
- Mounts under the rear seat for lockable storage **(hardware included)**
- Pull out drawer can be accessed from the driver or passenger side
- Heavy-duty steel construction with texture black NRT™ powder coat
- Three plastic partitions to contain items for transport
- Three year warranty





## MUD FLAPS

- Fits most trucks, vans, and SUVs
- Installs in minutes
- Mounting hardware included
- Sold in pairs

### UNIVERSAL BRITE-TREAD **1** **DZ1808**

- 11" x 19" (with radius notch)
- Classic Brite-Tread aluminum
- Fits front or rear wheels

### UNIVERSAL BLACK-TREAD **2** **DZ1808TB**

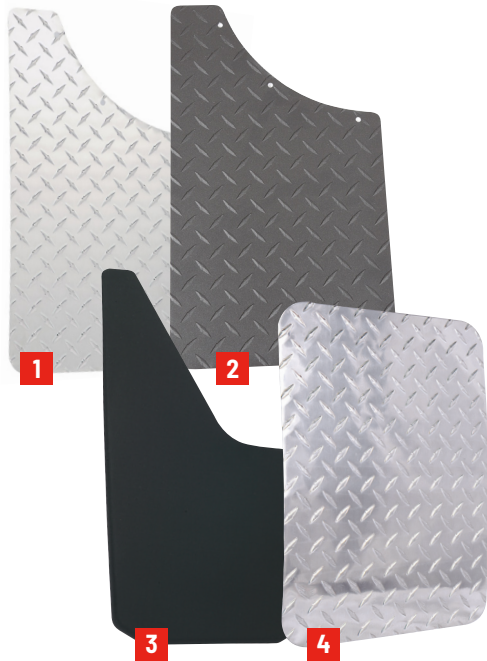
- 11" x 19" (with radius notch)
- Textured black powder coat finish
- Fits front or rear wheels

### UNIVERSAL PLASTIC **3** **DZ17939**

- 11" x 18" • with notch
- Fits front or rear wheels

### BRITE-TREAD **4** **DZ1800**

- 12" x 16"
- Classic Brite-Tread aluminum finish
- Fits full size trucks
- Measure for clearance



## LICENSE PLATE MOUNT

### DZLPMOUNT

- Legally relocate your front license plate
- Durable steel construction
- Textured black powder coat finish
- Hardware included



### ALL WEATHER FRONT MATS **5** **DZ90710**

- 19" x 28"
- Edges can be trimmed

### ALL WEATHER TREAD MATS **6** **DZ90709**

- Brite-Tread aluminum insert
- 20.5" x 27"

### ALL WEATHER REAR MATS **7** **DZ90713**

- 17" x 17"

### ALL WEATHER FULL-WIDTH MAT **8** **DZ90711**

- Sold individually
- 61" x 27" Overall



## DITCH LIGHT MOUNTS

- Custom fit for full size trucks
- Installs in minutes
- Mounting hardware included

*\* Lights not included*



### DITCH LIGHT MOUNTS

#### CHEVROLET / GMC

##### Silverado/Sierra

22	-	19	1500 model	DZ1071
----	---	----	------------	--------

##### Colorado / Canyon

22	-	15		DZ1073
----	---	----	--	--------

#### DODGE / RAM TRUCKS

##### Ram Pickup

22	-	19	1500 model	DZ1076
----	---	----	------------	--------

#### FORD

##### F150 Pickup

22	-	15		DZ1076
----	---	----	--	--------

##### Super Duty Pickup

22	-	17		DZ1077
----	---	----	--	--------

##### Ranger

22	-	19		DZ1078
----	---	----	--	--------

#### TOYOTA

##### Tundra Pickup

21	-	16		DZ1076
----	---	----	--	--------

##### Tacoma

22	-	07		DZ1074
----	---	----	--	--------





## PLATINUM TOOL BOX

- Automotive-grade handles allow for smooth operation and secure closure
- Constructed of heavy gauge .090 Brite-Tread aluminum
- The automotive-grade rubber seal keeps elements out
- Features a heavy duty steel tray
- Smooth extruded aluminum reinforced lid



Textured  
Black-Tread



Available in: Crossover



## BLUE LABEL TOOL BOX

- The automotive-grade rubber seal keeps elements out
- Self-adjusting strikers close tightly no matter how hard you push
- Added security with push button latches
- Full length hidden piano hinge for extra strength
- Removable tool tray in crossover styles
- Built-in divider for convenience and strength



Aluminum  
Brite-Tread



Gloss  
Black-Tread



Textured  
Black-Tread

AVAILABLE IN:



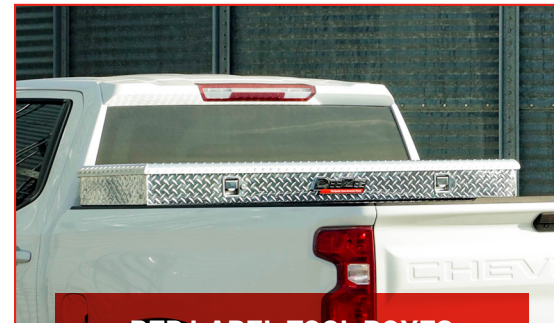
Crossovers



Chests



Side Mounts



## RED LABEL TOOL BOXES

- The closed cell foam gasket keeps out the elements
- Adjustable striker for a tight seal
- Added security with lockable paddle or pull handle
- Full length hidden piano hinge for extra strength
- Removable tool tray in crossover styles
- Double v-pan lid stiffener creates strength and rigidity



Aluminum  
Brite-Tread



Gloss  
Black-Tread



Textured  
Black-Tread



## HARDWARE TOOL BOXES • STEEL

Storage products built with the contractor in mind but versatile enough for the rest of us

- Sturdy 20-gauge steel
- NRT™ corrosion resistant powder coating
- Paddle handle latches and adjustable strikers
- Full length piano hinge for extra strength
- Closed cell foam gasket



White  
Steel



Black  
Steel

AVAILABLE IN:



Crossovers



Chests



Side Mounts

AVAILABLE IN:



Crossovers



Chests



Side Mounts





**DZ6163P & DZ6170P**

### POLY CROSSOVER

- Combines the functionality of a crossover box with the benefits of a poly plastic container
- Features a full-length locking rod that engages strikers built into the lid
- Single cam lock secures the lid tightly
- Overlapping lid deflects water
- Double-walled lid for extra support
- Integrated frame supports
- Installation bracket included



**DZ91717P**

### POLY TRIANGLE TRAILER BOX

- Dimensions: Back-36", Front-18", Width-19.5", Height-18"
- Rigid poly plastic frame resists warping
- Lightweight yet solid construction
- Double wall lid for extra support
- Perfect fitment for trailer tongues
- Steel hasp provides security\*



**DZ6535P**

### SMALL POLY CHEST



**DZ6537P**

### LARGE POLY CHEST



**DZ95P**

### POLY WHEEL WELL BOX



35" x 14" x 13"

- Fits great in SUV's
- Molded locking tabs\*
- Double wall lid for extra support



39" x 27" x 17"



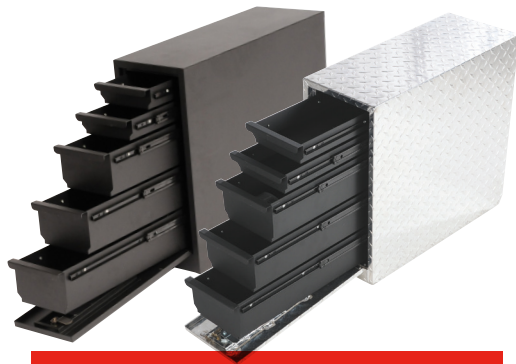
- Fits behind the truck wheel well
- Lid reverses easily for driver or passenger side application
- Sturdy full length hinge
- Lockable lift-up lid
- Does not interfere with most tonneaus covers

**\*PADLOCK NOT INCLUDED**



BLUE LABEL		BRITE-TREAD		GLOSS BLACK		TEXTURED BLACK			L	W	H	L1	W1	H1	W2	H2	Vol.	
CROSSOVERS																		
STANDARD		DZ9170		DZ9170B		DZ9170TB			69.75"	19.875"	17.5"	60.75"	-	12.5"	-	5"	12.8 cu. ft.	
LOW PROFILE		DZ9170L		DZ9170LB		-			69.75"	19.875"	17.5"	60.75"	-	12.5"	-	5"	12.5 cu. ft.	
WIDE		DZ9170W		DZ9170WB		-			69.75"	25.8"	14.6"	60.75"	-	9.6"	-	5"	13.9 cu. ft.	
CHESTS																		
STANDARD		DZ9546		DZ9546B		DZ9546TB			46.5"	20.125"	14.2"	-	-	11.4"	1.4"	-	7.6 cu. ft.	
SIDE MOUNTS																		
48" SIDE MOUNT		DZ9748		DZ9748B		-			48"	14.25"	11"	-	10"	5"	4.25"	5"	3.75 cu. ft.	
68" SIDE MOUNT		DZ9768		DZ9768B		-			68"	14.25"	11"	-	10"	5"	4.25"	5"	5.3 cu. ft.	
RED LABEL	HANDLE	BRITE-TREAD	GLOSS BLACK	TEXTURED BLACK	WHITE STEEL	BLACK STEEL		L	W	H	L1	W1	H1	W2	H2	Vol.		
CROSSOVER																		
STANDARD	PADDLE	DZ8170	DZ8170B	DZ8170TB	DZ8170S	DZ8170SB		69.75"	20"	12.2"	60.75"	17.125"	7.2"	1.44"	6"	8.4 cu. ft.		
	PULL	DZ10170	-	DZ10170TB														
MID-SIZE • STANDARD	PADDLE	DZ8163	DZ8163B	-	DZ8163S	DZ8163SB		63"	20"	12.2"	54"	17.125"	7.2"	1.44"	6"	7.4 cu. ft.		
DEEP	PADDLE	DZ8170D	DZ8170DB	-				69.75"	20"	18.25"	60.75"	17.125"	13.25	1.44"	6"	12 cu. ft.		
LOW-PROFILE	PADDLE	DZ8170L	DZ8170LB	DZ8170LTB				69.75"	20"	12.2"	60.75"	17.125"	11.2"	1.44"	2"	8 cu. ft.		
	PULL	DZ10170L	-	DZ10170LTB														
DOUBLE-LID	PADDLE	DZ8370	DZ8370B	-	-	DZ8370SB		69.75"	20"	12.2"	60.75"	17.125"	7.2"	1.44"	6"	8.4 cu. ft.		
	PULL	-	-	DZ10370TB														
MID-SIZE • DOUBLE-LID	PADDLE	DZ8363	-	-				63"	20"	12.2"	54"	17.125"	7.2"	1.44"	6"	7.4 cu. ft.		
CHESTS																		
SMALL CHEST	PADDLE	DZ8537	DZ8537B	-				37.125"	19"	16"		-	13.1"	2.4"	3.9"	6.4 cu. ft.		
MID SIZED CHEST	PADDLE	DZ8546	DZ8546B	DZ8546TB	DZ8546S	DZ8546SB		46.5"	19"	16"		16.6"	13.1"	2.4"	3.9"	8 cu. ft.		
	PULL	-	-	-														
STANDARD CHEST	PADDLE	DZ8556F	DZ8556FB	-	DZ8556FS	DZ8556FSB		56"	19"	16"		16.6"	13.1"	2.4"	3.9"	9.8 cu. ft.		
SLANTED CHEST	PADDLE	DZ8556	DZ8556B	-				56"	19"	16"		12.375"	13.1"	6.625"	3.9"	8.9 cu. ft.		
WIDE CHEST	PADDLE	DZ8560W	DZ8560WB	-				60"	24"	18.1"			15.4"	2.4"	3.9"	14.9 cu. ft.		
SIDE MOUNTS																		
48" SIDE MOUNT	PADDLE	DZ8748	-	-	DZ8748S	DZ8748SB		48"	12.75"	10"		8.5"	6"	4.25"	5"	3 cu. ft.		
60" SIDE MOUNT	PADDLE	DZ8760	-	-	DZ8760S	DZ8760SB		60"	12.75"	10"		8.5"	6"	4.25"	5"	3.7 cu. ft.		
68" SIDE MOUNT	PADDLE	DZ8768	-	-				68"	12.75"	10"		8.5"	6"	4.25"	5"	5.1 cu. ft.		
POLY TOOL BOXES			PART #					L		W		H		L1		H2		Vol.
CROSSOVER																		
MID SIZE CROSSOVER			DZ6163P					63"		14.75"		14.37"		54"		-		5.4 cu. ft.
STANDARD CROSSOVER			DZ6170P					70.5"		14.75"		14.37"		60.5"		-		6.2 cu. ft.
CHESTS																		
SMALL CHEST			DZ6535P					35"		14"		13"		-		-		3.6 cu. ft.
LARGE CHEST			DZ6537P					39"		27"		17"		-		-		10.35 cu. ft.
SPECIALTY BOXES																		
TRIANGLE TRAILER BOX			DZ91717P					36"(back)		18.75"		18"		18"(front)		-		6 cu. ft.
WHEEL WELL BOX			DZ95P					37"		7.75"		19.5"		14"		8.5"		2.2 cu. ft.





## 5 DRAWER WHEEL WELL BOX

**DZ95D** steel  
**DZ95DA** aluminum outer shell

- 5 drawers with single door opening and cam lock
- Quick release mounting plate for easy removal
- Steel constructed drawers with guide rails for smooth operation



## ALUMINUM WHEEL WELL BOX

**DZ94(B)** Driver side  
**DZ95(B)** Passenger side

- Lockable storage behind wheel wells
- Lift-up lid with a sturdy piano hinge
- Fits full size trucks with 6' and 8' beds
- Available in Brite-Tread aluminum and gloss black



## ATV TOOL BOXES

**M206** Small 35" x 12" x 9"  
**M207** Large 35" x 12" x 12.5"

- Great for universal storage
- Gloss black powder coat finish
- ATV mounting hardware included



## TOPSIDER TOOL BOXES

- Storage for the top rail of the truck bed
- Lockable stainless steel t-handle latch
- Drop down doors for easy access
- Safety chains to support the door
- Water resistant c-channel and bulb seal
- All mounting hardware included

Many sizes available!



Aluminum  
Brite-Tread



Textured  
White-Tread



Textured  
Black-Tread



## TRIANGLE TRAILER BOX

4 sizes available

- Brite-Tread aluminum construction
- Lockable paddle handle
- Gas shock to support the lid
- Great for trailer tongue storage



## NARROW TOOL BOXES

**DZ6163N(B)** Mid size  
**DZ6170N(B)** Full size

- Narrow profile design fits great for today's short bed trucks
- Lockable paddle handles, gas shocks, and foam gasket to keep the elements out



## UNDERBED TOOL BOXES

- Brite-Tread aluminum and steel storage with mounting versatility
- Water-channel and bulb seal help keep out water
- T-handle creates a tight barrier when closed
- Take 4.5" from length & height to get opening dimensions
- Mounting brackets sold separately

Many sizes available!



Aluminum  
Brite-Tread



Textured  
Black-Tread



Black  
Steel



## UNDERBED MOUNTING BRACKETS

- DB-2502**
- Securely mount underbed boxes
  - Heavy duty welded steel construction
  - Sold in pairs
  - Required for installation
  - 18" H x 2" W x 18" H



WHEEL WELL TOOL BOXES													
STYLE	STEEL	POLY	BRITE-TREAD	GLOSS BLACK		L	W	H	L1	H2	Vol.		
DRAWER WHEEL WELL													
BLACK POWDER COATED STEEL	DZ95D	-	-	-		20.5"	8.5"	18.875"	-	-	1.9 cu. ft.		
BRITE-TREAD ALUMINUM BODY	-	-	DZ95DA	-		20.5"	8.5"	18.875"	-	-	1.9 cu. ft.		
WHEEL WELL													
DRIVER SIDE (ALUMINUM)	-	-	DZ94	DZ94B		37"	7.75"	19.5"	14"	8.5"	2.2 cu. ft.		
PASSENGER SIDE (ALUMINUM)	-	-	DZ95	DZ95B		37"	7.75"	19.5"	14"	8.5"	2.2 cu. ft.		
REVERSIBLE POLY	-	DZ95P	-	-		37"	7.75"	19.5"	14"	8.5"	2.2 cu. ft.		
SPECIALTY TOOL BOXES													
STYLE	BRITE-TREAD		GLOSS BLACK	TEXTURED BLACK			L	W	H	L1	H1	H2	Vol.
NARROW BOXES													
MID SIZE	DZ6163N		DZ6163NB		-		63"	14"	14.25"	53.5"	9.25"	5"	5 cu. ft.
FULL SIZE	DZ6170N		DZ6170NB		-		69.75"	12"	14.25"	60.75"	9.25"	5"	5.75 cu. ft.
ATV BOXES													
SMALL	-		M206		-		35"	12"	9"	-		-	2 cu. ft.
LARGE	-		M207		-		35"	12"	12.5"	-		-	3 cu. ft.
JEEP BOXES													
NARROW	-		-		DZ6534JNTB		35"	16"	12"	-	-	-	3.5 cu. ft.
WIDE	-		-		DZ6534JWTB		35"	30"	12"	-	-	-	7 cu. ft.
TRIANGLE TRAILER													
SMALL ALUMINUM	-		-		DZ92716		34" (back)	14.25"	18"	16" (front)	-	-	3.71 cu. ft.
LARGE ALUMINUM	-		-		DZ92717		34" (back)	19"	22.75"	20.75" (front)	-	-	7.24 cu. ft.
LOW PROFILE 1					DZ92716		40.75" (back)	16.75"	9.25"	16.5" (front)	-	-	2.65 cu. ft.
LOW PROFILE 2					DZ92717		32.8" (back)	24.5"	8.25"	20.8" (front)	-	-	3 cu. ft.
POLY	-		DZ91717P		-		37"		19.5"	10"	14"	8.5"	2.2 cu. ft.
TOPSIDER TOOL BOXES													
BRITE-TREAD		TEXTURED BLACK		TEXTURED WHITE			L		W		H		Vol.
DZ70		DZ70TB		DZ70WH			48"		12"		16"		5.33 cu. ft.
DZ59		DZ59TB		DZ59WH			60"		15.5"		20"		10.75 cu. ft.
DZ79		DZ79TB		DZ79WH			72"		15.5"		20"		12.75 cu. ft.
DZ71		DZ71TB		DZ71WH			90"		15.5"		20"		16 cu. ft.
DZ67		DZ67TB		DZ67WH			96"		15.5"		20"		17.22 cu. ft.
ALUMINUM UNDERBEDS						STEEL UNDERBEDS							
BRITE-TREAD	TEXTURED BLACK	L	W	H	Vol.	BLACK STEEL		L	W	H	Vol.		
DZ61	DZ61TB	24"	18"	18"	4.5 cu. ft.	DB-2600		24"	18"	18"	4.5 cu. ft.		
DZ74	DZ74TB	30"	20"	18"	5.94 cu. ft.	DB-2603		30"	18"	18"	5.63 cu. ft.		
DZ77	DZ77TB	36"	20"	18"	7 cu. ft.	DB-2601		36"	18"	18"	6.75 cu. ft.		
DZ75	DZ75TB	48"	20"	18"	9.5 cu. ft.	DB-2602		48"	18"	18"	9 cu. ft.		
DZ76	DZ76TB	60"	20"	18"	11.9 cu. ft.	DB-2604		60"	18"	18"	11.25 cu. ft.		





**DZ7365017TB**

**TOOL BOX RAIL KIT**

- Made from Dee Zee's 1.75" Hex Series extruded aluminum
- Tied together with rounded die cast aluminum corners
- Add secure anchor points on top of the lid with Hex Series Tie Downs (***sold separately***) (pg.24)
- All hardware included
- Texture black powder coat
- Fits full size tool boxes

### TOOL BOX MOUNTING KIT **DZ97904**

- Premium Mounting Kit
- Replaces standard J-bolt
- \*Not recommended for Ford Aluminum Beds***

### TOOL BOX MOUNTING KIT **DZ97910**

- Ford Aluminum Bed Premium Mounting Kit
- Custom-designed for secure fit

### GRIP TAPE **DZ46**

- 2-11/16" x 12' black adhesive tape
- \*Use it anywhere for a non-slip surface***

### **DZTBSHOCK1**

10.5" 80 lb. Shock • ball & socket mount

### **DZTBSHOCK2**

10" 70 lb. Shock • blade/eyelet mount

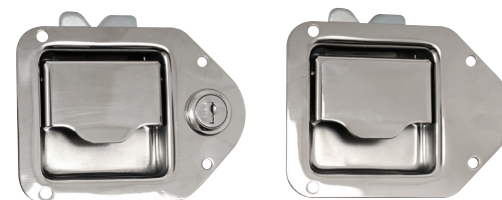
### **DZTBSHOCK3**

10.5" 60 lb. Shock • ball & socket mount

### **DZTBSHOCK4**

10.875" 40 lb. Shock • ball & socket mount

***\*Protective sleeve***



**DZTBLATCH1(B)** *stainless steel or black*  
• Locking-hook style latch ***\*Lock and keys included***

**DZTBLATCH2** *stainless steel*  
• Non-locking • hook style latch



**DZTBLATCH3** *stainless steel*  
• Locking • post style latch ***\*Lock and keys included***

**DZTBLOCK1**  
• Replacement lock cylinder with pair of keys



**DZTBLATCH4** *stainless steel*  
• Locking • pull-handle latch. ***\*Lock and keys included***

**DZTBLATCH4B** *black powder coat*  
• Locking • pull-handle latch. ***\*Lock and keys included***



**DZTBSTRIKER**  
• Striker/lid catch for post style latches (***right***)

**DZTBSTRIKER2**  
• Striker/lid catch for hook style latches (***left***)



**DZTBTRAY1** *Plastic tool box tray*  
• Molded plastic construction  
• 10lb. weight limit

**DZTBMAT2**  
• Non-slip mat with no rust™ by Zerust® vapor shield  
• 70" x 20"  
• .042 thickness

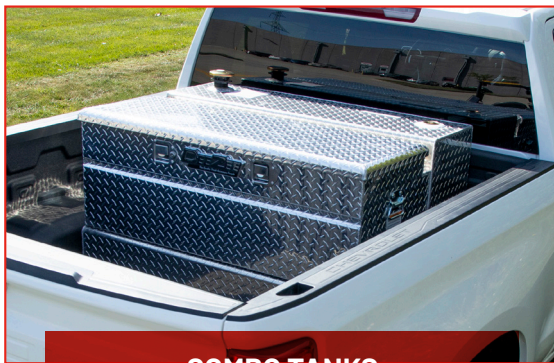




## TRANSFER TANKS

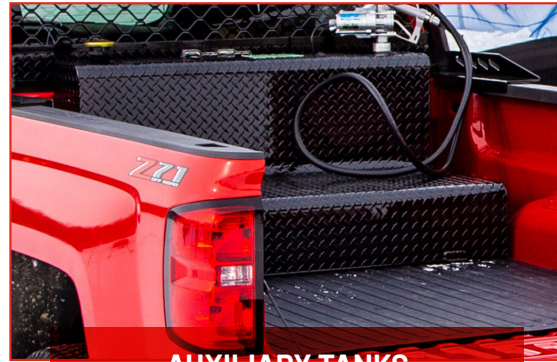
- Internal baffles controls flow of liquid and adds strength
- Mounting tabs secures tank to truck bed
- Radius curves design allows liquid to move freely around corners and eliminates pressure on weld points
- Drain plugs allow for draining the tank by gravity
- Lockable breathing cap reduces pressure & eliminates the vacuum when pumping

Available in: Rectangle, Square, Combo, or L-shaped



## COMBO TANKS

- The convenience of a Utility Chest mounted to a Transfer Tank
- Red Label Utility Chest features lockable paddle handles, lid stiffener, and gas shocks (**pg. 31**)
- All standard tank features like lockable-Breathing Caps, Drain Plugs, Radius Curves...**see above**



## AUXILIARY TANKS

**The same great tanks you rely on, now with the ability to feed directly into the fuel line of your diesel vehicle.**

- All standard tank features like lockable-Breathing Caps, Drain Plugs, Radius Curves...**see left**
- Pressure tested to 29 PSI: Federal Regulation 178.814
- Full-size baffles add extra strength and controls motion

Available in: Rectangle, Square, Combo, or L-shaped



## COMBO TANK WITH PUMP

- Convenient lockable Storage Bolted onto A Transfer Tank
- Transfer Tank Constructed of .125 Brite-Tread Aluminum
- Utility Chest Features .056 Brite-Tread Aluminum
- Radius Curve Eliminates Weld Pressure Points
- 2 Stability Baffles and Drain Plug
- Comes with a 15 GPM to be mounted inside of the toolbox **installation of pump required by consumer**



## DZGASCAP 1

- Vented cap and neck for transfer tanks
- Use padlock for extra security **not included**

## DZGASCAP2 2

- Replacement vented cap only
- Use padlock for extra security **not included**
- \*Does not include threaded neck**

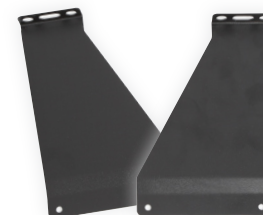
## DZGASCAP3 3

- Built-in lock, vented cap, and neck for transfer tanks
- \*Lock & keys included**



## BUILD YOUR OWN COMBO

Mix and match colors and finishes of Red Label Utility Chests (**pg. 31**) and L-shaped tanks to create your own custom combo tank using **DZBKTCOMBO**



## CONNECTOR KITS

- Feed diesel directly into your fuel line
- All hoses and hardware included; some cutting required to OEM fuel hose
- Not designed for continuous flow. Valve must be closed during vehicle operation

**Sold Separately**

<b>#DZ97960</b>	<b>#DZ97961</b>
2011+ Chevrolet/GMC	99-10 Chevrolet/GMC
99-12 Dodge	
1999+ Ford	<b>#DZ97962</b>
2016+ Nissan Titan XD	2013+ Dodge

## 48" BASE

**DZ8546(B)(S)(SB) + DZ92747(B)(S)(SB)**



**OR**

## 56" BASE

**DZ8556F(B)(S)(SB) + DZ92756(B)(S)(SB)**





TRANSFER TANKS													
STYLE	BRITE-TREAD ALUMINUM	BLACK-TREAD ALUMINUM	WHITE STEEL	BLACK STEEL		L	W	H	W1	H1	W2	H2	Vol.
RECTANGLE + SQUARE													
WEDGE	DZ92556	DZ92556B	-	-		56"	20"	20"	8.3"	8.3"	-	-	76.2 gal.
SQUARE	DZ91750	-	DZ91750S	DZ91750SB		24"	24"	24"	-	-	-	-	55 gal.
NARROW RECTANGLE	DZ92556N	DZ92556NB	DZ92556NS	DZ92556NSB		56"	9.625"	19"	-	-	-	-	40 gal.
HIGH CAPACITY RECTANGLE	DZ91753	-	DZ91753S	DZ91753SB		48"	24"	24"	-	-	-	-	108 gal.
L-SHAPED													
29" BASE	-	-	DZ91754S	DZ91754SB		29"	31"	24"	10"	8"	21"	16"	55 gal.
48" BASE	DZ92747	DZ92747B	DZ92747S	DZ92747SB		46.75"	32.75"	25.5"	13"	7.75"	19.75"	17.75"	92 gal.
56" BASE	DZ92756	DZ92756B	DZ92756S	DZ92756SB		56"	32.75"	25.5"	13"	7.75"	19.75"	17.75"	111 gal.
COMBO TANK + TOOL CHEST													
48" BASE HIGH CAPACITY	DZ92647	DZ92647B	-	DZ927647SB		46.75"	32.75"	25.5"	13"	7.75"	19"	16"	92 gal.
48" COMBO <b>WITH PUMP</b>	DZ92847	DZ92847TB	-	-		46.75"	30"	24"	-	11"	-	13"	62 gal.
54" BASE	-	-	DZ91740S	DZ91740SB		54"	18"	20"	9"	6.5"	11.5"	12.5"	50 gal.
54" BASE LOW PROFILE	DZ92740	DZ92740B	-	-		54"	18"	16"	9"	6.5"	11.5"	7"	43 gal.
56" BASE HIGH CAPACITY	DZ92656	DZ92656B	-	DZ92656SB		56.25"	32.75"	25.5"	13"	7.75"	19"	16"	111 gal.
56" COMBO <b>WITH PUMP</b>	DZ92856	DZ92856TB	-	-		56.25"	30"	24"	-	11"	-	13"	75 gal.
AUXILIARY TRANSFER TANK													
STYLE	BRITE-TREAD ALUMINUM	BLACK-TREAD ALUMINUM	WHITE STEEL	BLACK STEEL		L	W	H	W1	H1	W2	H2	Vol.
RECTANGLE													
LONG RECTANGLE	DZ91752X	-	-	-		60"	9"	19"	-	-	-	-	40 gal.
HIGH CAPACITY RECTANGLE	DZ91753X	-	-	DZ91753XSB		48"	24"	24"	-	-	-	-	108 gal.
L-SHAPED													
48" BASE	DZ91767X	DZ91767XB	-	-		48"	29"	24"	9"	9"	21"	15"	80 gal.
56" BASE	-	-	-	-		56"	29"	24"	9"	9"	21"	15"	92 gal.
COMBO TANK + TOOL CHEST													
48" BASE	DZ91741X	DZ91741XB	-	-		48"	29"	24"	9"	9"	20"	15"	80 gal.
54" BASE LOW-PROFILE	DZ92740X	DZ92740XB	-	-		54"	18"	16"	6.5"	9"	11.5"	7"	43 gal.
56" BASE	-	DZ91742XB	-	-		56"	29"	24"	9"	9"	20"	15"	92 gal.



Dee Zee, Inc. will manufacture the highest quality products for our customers through innovation, teamwork, and continuous improvement. Should the original purchaser experience manufacturer defects in materials or workmanship under normal use, Dee Zee, Inc. offers the below warranty coverage.

Damage resulting outside of normal use such road hazards such as gravel or other debris, product misuse, improper installation, impairments from accidents, product modifications, improper repairs, spills, vandalism, product neglect, lack of maintenance, not following cleaning instructions, or acts of God are not covered under this warranty agreement.

**LIMITED LIFETIME WARRANTY:**

- THREE-YEAR WARRANTY:**

- ### Warranty Coverage – Finish Protection

### Warranty Coverage – Component Parts

All replacement parts are non-returnable and non-refundable. Some replacement parts are available online at [www.deezee.com/replacement-parts/](http://www.deezee.com/replacement-parts/) or they can be ordered via credit card by calling 1-800-779-2102.

**GPI® Fuel Pumps and Accessories**

### Warranty Submission Procedure

In the event the originally purchased product style is no longer available, Dee Zee will warranty the defective part with a current equivalent. If a comparable product is no longer available, the product would be returned to the store of purchase for a refund or the applicable cost difference can be paid to choose an alternate style.

All products are sold as appearance accessories and should not be relied upon as protection for the vehicle or its occupants in the event of an accident. Vehicles equipped with a supplemental restraints system (air bags) deployed by impact and collision avoidance systems should not be modified in any way. Always consult the vehicle manufacturer if you have any questions regarding supplemental restraint systems and sensors.

Buyer assumes all risk, liability, and cost for the installation and use of Dee Zee products. Dee Zee, Inc. assumes no liability for injury, loss, incidental or consequential damages in the event of an accident.

**WARNING:** Operating, servicing, and maintaining a passenger vehicle can expose you to chemicals such as lead, phthalates, engine exhaust, and carbon monoxide that are known to the State of California cause cancer and birth defects or other reproductive harm. To minimize exposure, service your vehicle and its accessories in a well-ventilated area and wear gloves or wash your hands frequently. For more information visit: <https://www.p65warnings.ca.gov/>





*Scan with smart phone to  
view Application Guide*

**www.DeeZee.com**

**PO Box 604  
Des Moines, IA 50303  
P: 515.265.7331  
F: 515.265.7926**

**© Dee Zee, Inc.  
Printed in the USA  
Part #: 900-2022T**

**Follow Us:  
@DeeZeeMFG**



*The catalog contents are designed for reference only. Refer to our application guide for product fitment and measure the vehicle before proceeding with installation.  
Buyer assumes all risk and liability.*