

# DEEZEE®

*The Quality Truck Accessory People*

## PRODUCT CATALOG



*High Quality,  
American Made  
Products Since 1977*





## SIDE STEPS & UTILITY STEPS

- 4 HEX SERIES HOOP STEPS
- HEX SERIES CAST STEPS
- BED ACCESS STEPS
- BRITE-TREAD RUNNING BOARDS
- NXT STEPS
- NXC STEPS
- 5 APEX STEPS
- ROUGH STEPS
- 6" SIDE STEPS
- NERF BARS
- SIDE BOX STEPS
- BUMPER STES



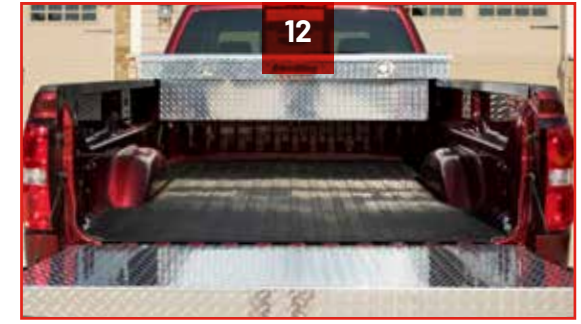
## TONNEAU & PLATFORM RACKS

- 6 TONNEAU HINGE SLIDE
- UNDER TONNEAU
- DRAWER STORAGE
- TONNEAU CROSS BARS
- 7 GUARDIAN TONNEAU COVER
- 8 PLATFORM CARGO RACK
- CARGO CARRIER
- 9 HEX PLATFORM BED MOUNT KIT
- JEEP PLATFORM RACK MOUNT KIT
- HEX PLATFORM CLAMP KIT



## RACK & OVERLAND SYSTEMS

- 10 CURVED CAB RACK
- ANGLED CAB RACK
- CAB RACK TIE DOWNS
- LIGHT MOUNTS
- 11 INVIS-A-RACK
- HALF LADDER RACK
- CAB RACKS
- SIDE RAILS
- TOP RAILS
- MOLLE PANELS



## VEHICLE ACCESSORIES

- 12 HEX SIDE RAILS
- HEX CROSS RAILS
- UNIVERSAL CROSS RAILS
- HEX SERIES IN-BED RAILS
- 13 TRUCK BED TIE DOWNS
- HEX SERIES TIE DOWNS
- STAINLESS STEEL SIDE RAILS
- DITCH LIGHT MOUNTS
- 14 MUD FLAPS
- ALL WEATHER FLOOR MATS
- 15 HEAVY DUTY BED MAT
- TAILGATE MAT
- TAILGATE PROTECTOR
- 16 TAILGATE ASSIST
- GATE GUARDIAN
- 17 TAILGATE BOARD
- UNDER SEAT STORAGE DRAWER



**Proudly Owned & Operated  
In America Since 1977**



## JEEP & BRONCO ACCESSORIES

- 18 JL FULL ROOF RACK
- FREEDOM TOP RACK
- 19 MODULAR CARGO TRAY
- REAR CARGO BRACKET
- JEEP REAR CARGO BRACKET
- SOLID CARGO TRAY
- SPARE TIRE ACCESSORY MOUNT
- 20 HINGE COVERS
- REAR DOOR WORK BENCH
- DASH ACCESSORY MOUNT
- 21 FENDER SIGHT DELETE
- A-PILLAR BRACKET
- FENDER SIGHT BRACKET
- FENDER DELETE



## TOOL BOXES

- 22 PLATINUM TOOL BOX
- BLUE LABEL TOOL BOX
- 23 RED LABEL TOOL BOX
- HARDWARE TOOL BOX
- 24 UNIVERSAL CROSS RAILS
- POLY TRIANGLE TRAILER BOX
- 25 SMALL POLY CHEST
- LARGE POLY CHEST
- POLY WHEEL WELL BOX
- 28 5 DRAWER WHEEL WELL BOX
- ALUMINUM WHEEL WELL BOX
- TRIANGLE TRAILER BOX
- NARROW TOOL BOX
- 29 ANGLED TOPSIDER TOOL BOX
- TOPSIDER TOOL BOX
- UNDERBED TOOL BOX
- UNDERBED MOUNTING BRACKETS



## TRANSFER TANKS & PARTS

- 32 TRANSFER TANK
- AUXILIARY TANK
- COMBO TANK
- COMBO TANK WITH PUMP
- 33 GAS CAPS
- CONNECTOR KITS
- BUILD YOUR OWN COMBO
- POLY CROSSOVER TOOL BOX
- POLY TRAILER TRIANGLE BOX
- 36 ATV TOOL BOX
- TOOL BOX MOUNTING KITS
- GRIP TAPE
- TOOL BOX SHOCKS
- 37 TOOL BOX LATCH & LOCKS
- TOOL BOX PULL HANDLE
- TOOL BOX STRIKER
- TRAYS & MATS



[www.DeeZee.com](http://www.DeeZee.com)

Follow our socials to stay up-to-date on new products, upcoming deals and to participate in giveaways!

@DeeZeeMFG



# SIDE STEPS



## \*HEX HOOP STEPS

- Made of extruded aluminum and completed with a protective powder coat finish
- Integrated channel design allows you to adjust the position of the hoop steps

### FEATURES & BENEFITS

Material	Aluminum
Finishes	Gloss Black or Textured Black
Board Length	Reg: 52" Ext: 74" Crew: 87"



## \*HEX CAST STEPS

- Enclosed cast step design adds style and a larger step surface
- Integrated channel design allows you to adjust the position of the drop steps

### FEATURES & BENEFITS

Finishes	Textured Black
Board Length	Reg: 52" Ext: 74" Crew: 87"



## \*BED ACCESS STEPS

- Features three aluminum cast steps on each side
- Access the bed of your truck from the front of your rear wheel well
- Utilizes Hex Series extrusion for preferred cast step placement

### FEATURES & BENEFITS

Finishes	Textured Black
Board Length	94", 102", 112"



## \*APEX STEPS

- Extruded aluminum frame with cast aluminum steps, protected by textured black powder coat
- Step provides a spacious stepping surface at each door, ensuring superior traction
- Step surface allows dirt and debris to fall through and avoid build up

### FEATURES & BENEFITS

Finishes	Aluminum with Textured Black
Board Length	Extended: 74" Crew: 87"



## \*ROUGH STEPS

- Aluminum or Steel construction protected by NRT™ powder coating
- Step surface allows dirt and debris to fall through and avoid build up
- Grated steel top provides unmatched traction
- Made of rugged 12-gauge steel or heavy duty aluminum

### FEATURES & BENEFITS

Finishes	Textured Black
Board Length	Reg: 54" Ext: 77" Crew: 88"



## \*6" SIDE STEPS

- Choose between sleek 16-gauge steel or our Brite-Tread aluminum for a rugged off-road look
- Molded plastic end caps and step pads

### FEATURES & BENEFITS

Finishes	Textured Black Stainless Steel Black-Tread Brite-Tread
Board Length	Regular: 53" Extended: 74" Crew: 87"

*\*Brackets align with existing factory holes (custom brackets sold separately)*

# UTILITY STEPS



## BRITE-TREAD RUNNING BOARD

- The classic style that started it all for Dee Zee
- Non-rusting Brite-Tread aluminum construction with front mud flaps

### FEATURES & BENEFITS

Finishes	Brite-Tread
Board Length	Custom Per Vehicle



## \*NXT STEPS

- Slip resistant rubber grommets on step area
- Lightweight aluminum featuring a protective accent trim
- Ample 6" step area

### FEATURES & BENEFITS

Finishes	Black/Black Black/Chrome
Board Length	Reg: 51" Ext: 73" Crew: 86"



## \*NXC STEPS

- Made for SUV's
- Slip resistant rubber grommets line the 5" wide step area
- Full-length aluminum protective accent trim

### FEATURES & BENEFITS

Finishes	Black/Black Black/Chrome
Board Length	Standard: 71.5"



## NERF BARS

- 3" round or 4" oval tubular side steps
- Constructed from tough, 14-gauge 304 stainless steel material or tough, black 14-gauge mild steel
- Molded plastic step pads at each door to ensure secure footing on the step area
- Stainless steel or gloss black finish
- Custom fit brackets



## SIDE BOX STEPS

- Gain access to the front of your truck bed or tool box
- Cast aluminum step with non-slip surface attaches to the frame of your truck
- Black powder coat finish
- Mount using existing factory holes in front of your rear wheel

*\*300 lbs. Capacity • Driver side only*



## BUMPER STEPS

- Easy access to the rear or your truck bed
- Cast aluminum step with non-slip surface attaches to the frame of your truck
- Black powder coat finish
- Mount using existing factory holes below the bumper

*\*300 lbs. Capacity • Driver side only*

*\*Brackets align with existing factory holes (custom brackets sold separately)*

# GUARDIAN TONNEAU



## TONNEAU HINGE SLIDE **DZ99787**

### DETAILS

- Access to back half of hard tonneau without removal of mounted accessories
- Will pivot and slide near rear when raised
- Hold additional weight with upgraded shocks (***sold separately***)
- Patent Pending

*\*See slide in action on next page (pg. 7)*



## UNDER TONNEAU STORAGE DRAWER **DZ960D**

### DETAILS

- Security of a toolbox coupled with the convenience of a drawer
- Turns unused truck bed space into lockable storage
- Can be mounted on either driver or passenger side
- Heavy-duty 16-gauge steel rated for 600 lbs.
- 60" in total, 54" slide drawer
- 5 plastic dividers included

## TONNEAU CROSS BARS **DZ99782TB**

### DETAILS

- Universal use on any T-channel tonneau cover
- Features robust hexagonal aluminum tubing with integrated channels
- Mount using square or hex head bolts in the extrusion panel
- Textured black powder coat

**Weight Capacity:**  
200 lbs. dynamic,  
600 lbs. static



## GUARDIAN TONNEAU COVER

2019+ F150 | 2022+ Tundra | 2019+ Ram 1500  
**(5.5' Beds)**

DZ19550

2019+ Silverado/Sierra 1500  
**(5.5' Beds)**

DZ19551

### DETAILS

- Secure your gear under a lockable, water-resistant cover
- Easy to access handle that's lockable for extra security
- Constructed of Brite-Tread aluminum with an 800 lbs. static rating
- Extrusion channel offers endless tie down and accessory options
  - Tonneau Crossbars (***pg. 6***)
  - Platform Racks (***pg. 8***)
- Textured black powder coat finish with die cast corners
- Tailgate seal keeps dust out
- Detach quick-release shocks to fold rear panel 180 degrees ***\*Comes with tie down strap***
- Pair with our Hinge Slide for practical storage (***pg. 6***)



# PLATFORM RACKS



## PLATFORM CARGO RACK

<b>MATERIAL</b>	Aluminum
<b>FINISHES</b>	Textured Black
<b>DETAILS</b>	
<ul style="list-style-type: none"> <li>• Extruded aluminum extrusions</li> <li>• Die cast aluminum corners</li> <li>• Add tie downs anywhere along the rail to secure cargo</li> </ul>	
<b>Weight Capacity:</b>	
200 lbs. dynamic,	
600 lbs. static	
<b>*Weight evenly distributed</b>	

PLATFORM CARGO RACK	
HEX PLATFORM (WxL)	HEX PLATFORM
27" x 49"	DZ7327049HP
27" x 65"	DZ7327065HP
57" x 25"	DZ7357025HP
57" x 49"	DZ7357049HP
57" x 65"	DZ7357065HP
65" x 65"	DZ7365065HP
65" x 81"	DZ7365081HP

PLATFORM CARGO RACK	
Rail Size (WxL)	Part#
<b>2 Rail Kits (Qty)</b>	
36" (2)	DZ730036PR2
68" (2)	DZ730068PR2
<b>4 Rail Kits</b>	
27" (2) x 49" (2)	DZ732749PR4
41" (2) x 25" (2)	DZ734125PR4
57" (2) x 25" (2)	DZ735725PR4

## CARGO CARRIER

27x49	DZ7327049CC
27x65	DZ7327065CC
<b>DETAILS</b>	
<ul style="list-style-type: none"> <li>• Fits standard 2" hitch receivers</li> <li>• Easily removed when not in use</li> </ul>	
<b>*Hitch pin not included</b>	



## HEX PLATFORM BED MOUNT KIT DZ73BEDMOUNT

<b>MATERIAL</b>	Steel
<b>FINISHES</b>	Textured Black
<b>DETAILS</b>	
<ul style="list-style-type: none"> <li>• Our Universal Platform Mount will help you install a platform rack when you do not have a tonneau cover</li> <li>• Clamps simply to the side bed rail <b>*No drilling required</b></li> <li>• Set of 4 brackets, installation hardware included</li> </ul>	



## JEEP PLATFORM RACK MOUNT KIT DZ73JPPR

<b>MATERIAL</b>	Steel
<b>FINISHES</b>	Textured Black
<b>DETAILS</b>	
<ul style="list-style-type: none"> <li>• Mounts easily into drip rail <b>*No drilling required</b></li> <li>• Support foot for extra stability</li> <li>• Set of 4 brackets</li> </ul>	



## HEX PLATFORM CLAMP KIT DZ73PRCLAMP

<b>DETAILS</b>	
<ul style="list-style-type: none"> <li>• Mounts easily into T-channel <b>*No drilling required</b></li> <li>• Rubber sleeve for secure grip</li> <li>• Used to mount platforms on existing crossbars</li> <li>• Set of 4 clamps</li> </ul>	



# CAB RACKS

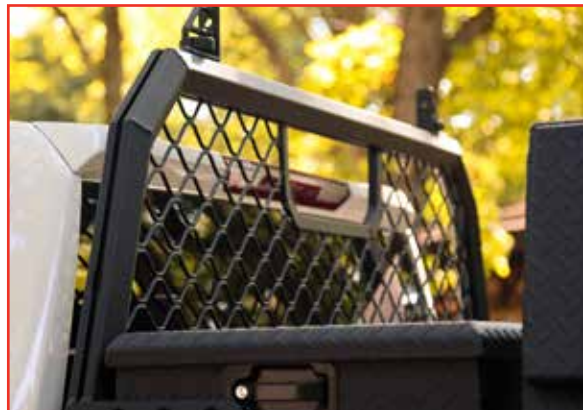
## CURVED CAB RACK

<b>MATERIAL</b>	Aluminum
<b>FINISHES</b>	Textured Black, Gloss Black, Silver
<b>DETAILS</b>	
<ul style="list-style-type: none"> <li>Integrated channel system offers many accessory possibilities</li> <li>Two cast aluminum tie-downs included</li> <li>2.5" hexagonal aluminum tubing</li> <li>Bolt-on mounting feet install into existing stake pocket holes</li> <li>Heavy-duty ultra mesh (front) or open frame (rear)</li> <li>Use 2 racks to transport longer items such as ladders, lumber, piping, and canoes</li> </ul>	



## ANGLED CAB RACK

<b>MATERIAL</b>	Aluminum
<b>FINISHES</b>	Textured Black
<b>DETAILS</b>	
<ul style="list-style-type: none"> <li>Integrated channel system offers many accessory possibilities</li> <li>Welded mounting feet install into existing stake pocket holes</li> <li>2.5" hexagonal aluminum tubing</li> <li>Heavy-duty ultra mesh (front) or open frame (rear)</li> <li>Use 2 racks to transport longer items</li> </ul>	



## CAB RACK TIE DOWNS DZ95002

<b>DETAILS</b>	
<ul style="list-style-type: none"> <li>Cast-aluminum construction</li> <li>Add anchor points to the integrated channels on Cab Racks</li> <li>Set of 2</li> </ul>	

## LIGHT MOUNTS

SIDE: DZ95064 L: DZ95062 XL: DZ95063

<b>DETAILS</b>	
<ul style="list-style-type: none"> <li>Black NRT™ powder-coated steel</li> <li>Sold individually</li> <li><b>*Lights not included</b></li> </ul>	



## INVIS-A-RACK

<b>MATERIAL</b>	Aluminum
<b>FINISHES</b>	Textured Black
<b>DETAILS</b>	
<ul style="list-style-type: none"> <li>Invisible to Invaluable...IN SECONDS!</li> <li>Uprights stow away when not in use and pop-up in seconds for use with ladders, kayaks, and more</li> <li>Installs easily without drilling</li> <li>500 lbs. capacity</li> <li><b>*As seen on Shark Tank™</b></li> </ul>	



## HALF LADDER RACK DZ95053

<b>MATERIAL</b>	Steel
<b>FINISHES</b>	Gloss Black
<b>SIZE</b>	23" x 52.5"
<b>DETAILS</b>	
<ul style="list-style-type: none"> <li>Hook and loop straps and ladder stop included</li> <li>Adjustable height and width</li> <li>Bolt-on installation, drilling required</li> <li>Rated for 200 lbs. weight capacity per set (2)</li> </ul>	

# OVERLAND SYSTEMS



## 1 CAB RACKS

<b>DETAILS</b>	
<ul style="list-style-type: none"> <li>Custom fit applications for mid-size and full-size trucks</li> <li>Use 2 cab racks as a base                             <ul style="list-style-type: none"> <li>- 1 mesh front rack</li> <li>- 1 open rear rack</li> </ul> </li> <li>Select from:                             <ul style="list-style-type: none"> <li><b>CURVED RACK</b></li> <li><b>ANGLED RACK</b></li> </ul> </li> </ul>	

## 2 SIDE RAILS

Full-size 5.5' bed	DZ95011TB
Full-size 6.5' bed	DZ95012TB
Mid-size	DZ95010TB
<b>DETAILS</b>	
<ul style="list-style-type: none"> <li>Lightweight, extruded aluminum construction with our textured black powder coat finish</li> <li>Adds strength by tying the front/rear racks together</li> <li>Includes 4 Side Rails</li> </ul>	

## 3 TOP RAILS

Full size 5.5' bed	DZ95021TB
Full size 6.5' bed	DZ95022TB
Mid-size	DZ95020TB

<b>DETAILS</b>	
<ul style="list-style-type: none"> <li>Creates a top mounting surface for adding roof top tents, cargo carriers, and more</li> <li>Includes 2 top rails &amp; 2 cross rails with integrated channels for custom rail placement</li> </ul> <p><b>Weight Capacity:</b> 225 lbs. dynamic, 600 lbs. static</p>	

## 4 MOLLE PANELS

12" wide	DZ95030TB
27" wide	DZ95031TB
<b>DETAILS</b>	
<ul style="list-style-type: none"> <li>Mounts to Overland Side Rails to provide a convenient and modular mounting surface</li> <li>Constructed of 14 gauge steel with a NRT™ textured black powder coat finish</li> </ul>	



### HEX SIDE RAILS

<b>WEIGHT RATING</b>	200lbs. tie-down load
<b>DETAILS</b>	
<ul style="list-style-type: none"> <li>Hexagonal aluminum tubing with built-in channel for endless accessory options (<b>accessories sold separately</b>)</li> <li>Cast stanchions mount in your stake pockets without drilling</li> <li>Add protection and tie-down points to your truck's bed rail</li> </ul>	



### UNIVERSAL CROSS RAILS

<b>Mid-size</b>	DZ99780TB
<b>Full-size</b>	DZ99781TB
<b>DETAILS</b>	
<ul style="list-style-type: none"> <li>Universal design installs under the lip of most truck beds</li> <li>Textured black extruded aluminum construction featuring a full-length integrated accessory channel</li> </ul> <p><b>Weight Capacity:</b> 225 lbs. dynamic, 600 lbs. static</p>	



### HEX CROSS RAILS DZ99799TB

<b>WEIGHT RATING</b>	Dynamic: 200lbs. & Static: 600lbs.
<b>DETAILS</b>	
<ul style="list-style-type: none"> <li>Installs onto Hex Series Side Rails (<b>sold separately &amp; required for installation</b>)</li> <li>Integrated channel allows custom placement for accessory such as roof top tents and more (<b>accessories sold separately</b>)</li> </ul>	



### HEX SERIES IN-BED RAILS

<b>DETAILS</b>	
<ul style="list-style-type: none"> <li>Installs into existing bed mounting points in RAMs and Jeep Gladiators</li> <li>Full-length integrated channel for mounting accessories*:               <ul style="list-style-type: none"> <li>Tie-Down Anchors #DZ99710TB (pg. 13)</li> <li>MOLLE Panels (pg. 11)</li> </ul> </li> </ul> <p><b>*Dodge applications require Dee Zee truck bed Tie-Downs to install #DZ99713 • x3 sets</b></p> <p><b>*Accessories not included</b></p>	



### TRUCK BED TIE-DOWNS

<b>Silverado / Sierra 2007+</b>	DZ97903
<b>Colorado / Canyon 2015+</b>	DZ97903
<b>RAM 1500 2019+</b>	DZ97913
<b>F150 2015+ / SuperDuty 2018+</b>	DZ97909
<b>DETAILS</b>	
<ul style="list-style-type: none"> <li>An easy way to add tie-down points for securing cargo</li> <li>Rated for up to 250 lbs</li> <li>No-drill installation into existing bed mounting points</li> <li>Made from cast aluminum</li> </ul>	



### STAINLESS STEEL SIDE RAILS

<b>MATERIAL</b>	Steel
<b>FINISHES</b>	Polished Stainless
<b>DETAILS</b>	
<ul style="list-style-type: none"> <li>Custom length applications install into stake pocket holes</li> <li>Thick, 1.9" diameter</li> <li>No-drill installation on full-size applications</li> </ul>	



### HEX SERIES TIE-DOWNS DZ99710TB

<b>DETAILS</b>	
<ul style="list-style-type: none"> <li>Add convenient anchor points to the integrated channels on Dee Zee Hex Series Products:               <ul style="list-style-type: none"> <li>Truck Racks (pg. 10)</li> <li>Side Rails (pg. 12)</li> <li>Cross Rails (pg. 12)</li> <li>Jeep Roof Racks (pg. 18)</li> <li>Overlanding Racks (pg. 11)</li> </ul> </li> <li>Slide and lock design does not require tools</li> <li>Rated for 200 lbs</li> </ul>	



### DITCH LIGHT MOUNTS

<b>DETAILS</b>	
<ul style="list-style-type: none"> <li>Custom fit for full-size trucks</li> <li>Installs in minutes</li> <li>Mounting hardware included</li> <li>Sold in pairs</li> </ul> <p><b>*Lights not included</b></p>	





**Fun Fact**

- Dee Zee has been manufacturing components and accessories in Central Iowa since 1977.

**MUD FLAPS**

<b>1</b>	<ul style="list-style-type: none"> <li>• 11" x 19" (with radius notch)</li> <li>• Classic Brite-Tread aluminum</li> <li>• Fits front or rear wheels</li> </ul>	DZ1808
<b>2</b>	<ul style="list-style-type: none"> <li>• 11" x 19" (with radius notch)</li> <li>• Textured black powder coat</li> <li>• Fits front or rear wheels</li> </ul>	DZ1808TB
<b>3</b>	<ul style="list-style-type: none"> <li>• 11" x 18"</li> <li>• ABS Plastic</li> <li>• Fits front or rear wheels</li> </ul>	DZ17939
<b>4</b>	<ul style="list-style-type: none"> <li>• 12" x 16"</li> <li>• Classic Brite-Tread aluminum</li> <li>• Fits full-size trucks</li> <li><b>*Measure for clearance</b></li> </ul>	DZ1800

**DETAILS**

- Fits most trucks, vans, and SUV's
- Installs in minutes
- Mounting hardware included
- Sold in pairs



**ALL WEATHER FLOOR MATS**

<b>5</b>	<ul style="list-style-type: none"> <li>• 19" x 28"</li> <li>• Edges can be trimmed</li> </ul>	DZ90710
<b>6</b>	<ul style="list-style-type: none"> <li>• 20.5" x 27"</li> <li>• Brite-Tread aluminum insert</li> </ul>	DZ90709
<b>7</b>	<ul style="list-style-type: none"> <li>• 17" x 17"</li> <li>• Rear Mats</li> </ul>	DZ90713
<b>8</b>	<ul style="list-style-type: none"> <li>• 61" x 27" Overall</li> <li><b>*Sold individually</b></li> </ul>	DZ90711



**HEAVY DUTY BED MAT**

**DETAILS**

- Prevent cargo from shifting and damaging your bed
- Rubber cleats hold the mat in place & allow water to drain
- Resists most chemical and oil spills
- Custom-fit applications contour wheel wells
- 3/8" (9.52mm) thick, tear-resistant rubber construction
- Universal utility and tailgate mats also available

**\*More applications available**



**TAILGATE PROTECTOR**

**DETAILS**

- 2 Styles available:
  - Standard Tailgate Cap
  - Full Tailgate Protector (above)
- Brite-Tread aluminum construction, also available with gloss black powder coat
- Custom-fit applications fit over factory plastic\*

**\*Tailgate Protectors cannot be installed if factory plastic has been removed**

BED MAT APPLICATIONS		Part #
<b>Silverado/Sierra 1500</b>		
2019+	5.5' Bed	DZ77019
	6.5' Bed	DZ77020
<b>Silverado/Sierra 2500/3500</b>		
2020+	6.5' Bed	DZ77022
	8' Bed	DZ77021
<b>Ram 1500</b>		
2019+	5.5' Bed	DZ77015
	6' Bed	DZ77016
<b>Ram 2500/3500</b>		
2013+	6.5' Bed	DZ76996
	8' Bed	DZ76917
<b>F150</b>		
2015+	5.5' Bed	DZ77005
	6.5' Bed	DZ77006
<b>Super Duty</b>		
2017+	6.5' Bed	DZ77011
	8' Bed	DZ77012
<b>Gladiator</b>		
2020+		DZ77026
<b>Tundra</b>		
2023+	5.5' Bed	DZ77028
	6.5' Bed	DZ77029
<b>Universal Bed Mat 4' x 8'</b>		DZ75005



**TAILGATE MAT DZ76700**

**DETAILS**

- Universal width fits most full-size pickups
- 60" x 19.5" • some trimming may be required
- Extra thick, 3/8" cord-enhanced rubber
- Can be trimmed to fit mid-size trucks
- Mounting hardware included
- Drilling required for installation



### TAILGATE ASSIST

DETAILS
• Custom designed specifically by make/model
• High quality, extensively tested for heavy use
• Works in conjunction with factory cables
• Easy, no-drill installation • installs in minutes
• All hardware included • minimal tools required
• Installs on driver side only • 1 unit per truck

**Safely control the drop rate of your truck's tailgate!**

MAKE / MODEL	YEARS	PART #	NOTES
<b>CHEVY/GMC</b>			
SILVERADO/SIERRA 2500/3500 HD	2020+	DZ43104	Work truck trim only
	19-14	DZ43102	
SILVERADO/SIERRA 1500	2019+	DZ43103	Work truck trim only
	18-14	DZ43102	
SILVERADO/SIERRA 1500/2500/3500	13-07	DZ43102	'07 Classic only
	07-99	DZ43100	
COLORADO/CANYON	2015+	DZ43105	
<b>DODGE / RAM</b>			
RAM 1500	2019+	DZ43302	New body style
	18-09	DZ43301	24 - 19 classic body only
	08-02	DZ43300	
RAM 2500/3500	2010+	DZ43301	
	09-03	DZ43300	
<b>JEEP</b>			
GLADIATOR	2020+	DZ43303	
<b>FORD</b>			
F-150	2015+	DZ43204	Not flareside
	14-04	DZ43200	
	03-97	DZ43203	
SUPER DUTY	2017+	DZ43205	Not flareside/SuperCrew
	16-99	DZ43203	
RANGER	2019+	DZ43206	
MAVERICK	2021+	DZ43207	



### GATE GUARDIAN **DZ97970**

DETAILS
• Theft deterrent for truck tailgates
• Uses tamper resistant security screw to deter thieves
• Foam liners and wrench included for installation
• Installs on passenger side <b>*not compatible with power tailgates</b>
• Patented design installs in minutes
• 3-Year limited warranty

### TAILGATE PREP BOARD

TAILGATE PREP BOARD		
<b>CHEVROLET / GMC</b>		
Silverado/Sierra 1500		
2019+		DZ284123
2019+	multi-function tailgate	DZ284123M
Colorado/Canyon		
2015+		DZ284124
<b>DODGE / RAM TRUCKS</b>		
Ram 1500 (not 60/40 split tailgate)		
2019+		DZ284144
<b>FORD</b>		
F150		
2015+		DZ284140
Super Duty		
23 - 17		DZ284103
Maverick		
2022+		DZ284127
Ranger		
2019+		DZ284126
<b>JEEP</b>		
Gladiator		
2019+		DZ284151
<b>TOYOTA</b>		
Tacoma		
23 - 16		DZ284172
<b>UNDER SEAT STORAGE DRAWER</b>		
<b>CHEVROLET / GMC</b>		
Silverado/Sierra 1500		
2019+		DZ700
Silverado/Sierra 2500/3500		
2020+		DZ700
<b>FORD</b>		
F150		
2015+		DZ701
Super Duty		
2017+		DZ701



### TAILGATE BOARD

DETAILS
• Solid work surface screws into existing factory holes
• 1/2" thick HDPE polymer composition
• UV and extreme weather resistant
• Maintenance-free, easy to clean up
• Excellent impact resistance
• 3-Year warranty



### UNDER SEAT STORAGE DRAWER

DETAILS
• Under seat slide and storage for your full-size Chevy or Ford
• Mounts under the rear seat for lockable storage <i>(hardware included)</i>
• Pull out drawer can be accessed from the driver or passenger side
• Heavy-duty steel construction with textured black powder coat
• 3 plastic partitions to contain items for transport
• 3-Year warranty

# JEEP ROOF RACKS



**JL FULL ROOF RACK** **DZ4472JL**

- Installs easily into existing drip rails
- Maximize the functionality of your Wrangler JL
- Full roof rack kit includes a 24" rack to cover the front doors AND a 60" rack that covers the backseat and cargo area
- Cross-bars can be moved forward and backwards in the aluminum hex extrusion to mount accessories like tents, canoes, or bikes
- Rubber bumpers leave roof scratch free and provide additional stability
- 24" rack covers the front or rear doors of your JK/JL Wrangler or Gladiator
- Available Dee Zee accessories:  
Solid Cargo Tray (*right*)  
Hex Series Tie-Downs (*pg. 13*)

## FEATURES & BENEFITS

<b>MATERIAL</b>	Aluminum Hex Extrusion		
<b>FINISHES</b>	Textured Black		
<b>SIZES</b>	24"	60"	
<b>WEIGHT RATING</b>	200 lbs. (static & dynamic)	600 lbs. (static)	225 lbs. (dynamic)

## FREEDOM TOP RACK

**DZ4463JP**



# CARGO ACCESSORIES

## MODULAR CARGO TRAY DZ4471JP

<b>MATERIAL</b>	Steel
<b>FINISHES</b>	Textured Black
<b>SIZE</b>	42" x 20.25"
<b>DETAILS</b>	
<ul style="list-style-type: none"> <li>• Finished with NRT™ (<b>No Rust Technology</b>) powder coat</li> <li>• Features a 2-piece bolt together design</li> <li>• Slide the shelf out for full access to the cargo area</li> <li>• Comes with 2 hex series tie downs</li> <li>• Custom bracket kit for JK &amp; JL models (<i>sold separately</i>)</li> </ul>	

## JEEP CARGO BRACKET DZ4468JL

- For JL model

## BRONCO CARGO BRACKET DZ4622

- Solid tray only



**Modular Cargo Tray + Jeep Cargo Bracket**



## SOLID CARGO TRAY DZ4470JP

<b>MATERIAL</b>	Steel
<b>FINISHES</b>	Textured Black
<b>SIZE</b>	42" x 20.25"
<b>DETAILS</b>	
<ul style="list-style-type: none"> <li>• Great for mounting to roof racks for additional storage space</li> <li>• Finished with NRT™ (<b>No Rust Technology</b>) textured black powder coat</li> <li>• Custom bracket kit mounts in rear cargo area using existing factory holes (<i>sold separately</i>)</li> </ul>	



## SPARE TIRE ACCESSORY MOUNT DZ95040TB

<b>MATERIAL</b>	Steel
<b>FINISHES</b>	Textured Black
<b>DETAILS</b>	
<ul style="list-style-type: none"> <li>• An easy way to add accessories to your spare tire</li> <li>• Fits any vehicle with a rear mounted spare tire</li> <li>• Elevated MOLLE panel design to secure items</li> <li>• Steel construction topped with a textured black NRT™ powder coat</li> <li>• Secured by any strap up to 3" wide (<i>not included</i>)</li> </ul>	

# BRONCO ACCESSORIES



## HINGE COVERS

2 Door - 2024+	DZ4625
4 Door - 2024+	DZ4626
4 Door - 21-23	DZ4619

DETAILS	
<ul style="list-style-type: none"> <li>Made of formed plastic</li> <li>Add protection for the wiring harness and door posts</li> <li>Patented design</li> </ul>	



## REAR DOOR WORK BENCH DZ4624

MATERIAL	14-gauge steel
DETAILS	
<ul style="list-style-type: none"> <li>Folds up out of the way when not in use</li> <li>MOLLE panel design for increased functionality</li> <li>Protected with textured black powder coat</li> <li>Maximum weight limit of 75 lbs.</li> <li>No drilling required for easy installation</li> <li>Features slide out, HDPE work surface</li> </ul>	



## DASH ACCESSORY MOUNT DZ4615

DETAILS	
<ul style="list-style-type: none"> <li>Add a channel to the dash for mounting</li> <li>Installs into factory mounting points</li> <li>14" long extrusion and custom end caps</li> <li>Safely mount accessories</li> </ul>	

## FENDER SIGHT DELETE DZ4616 A-PILLAR BRACKET DZ4613 FENDER SIGHT BRACKET DZ4614

MATERIAL	Aluminum	MATERIAL	Steel	MATERIAL	Steel
FINISHES	Textured Black	FINISHES	Textured Black	FINISHES	Textured Black
DETAILS		DETAILS		DETAILS	
<ul style="list-style-type: none"> <li>Made of die-cast aluminum</li> <li>Installs into existing factory points</li> <li>Hardware included</li> </ul>	<ul style="list-style-type: none"> <li>Install lights and other accessories</li> <li>No-drill installation</li> <li>Set of 2</li> </ul>	<ul style="list-style-type: none"> <li>Heavy duty steel construction</li> <li>Mount lights and other accessories</li> <li>No-drill installation</li> </ul>			



## FENDER DELETE DZ4617

MATERIAL	HDPE polymer
DETAILS	
<ul style="list-style-type: none"> <li>Modify your Bronco's fenders to give your ride a more aggressive old school look</li> <li>Installation hardware included</li> <li>Sold in sets of 4</li> </ul>	





**PLATINUM TOOL BOX** **DZ93170TB**

<b>MATERIAL</b>	Aluminum
<b>FINISHES</b>	Textured Black
<b>DETAILS</b>	
<ul style="list-style-type: none"> <li>Automotive-grade handles allow for smooth operation and secure closure</li> <li>Constructed of .090 Brite-Tread aluminum</li> <li>The automotive-grade rubber seal keeps elements out</li> <li>Smooth extruded aluminum reinforced lid</li> </ul>	



**BLUE LABEL TOOL BOX** **\*See chart (pg. 26)**

<b>MATERIAL</b>	Aluminum
<b>FINISHES</b>	Textured Black, Gloss Black, Brite-Tread
<b>DETAILS</b>	
<ul style="list-style-type: none"> <li>The automotive-grade rubber seal keeps elements out</li> <li>Self-adjusting strikers close tightly no matter how hard you push</li> <li>Added security with push button latches</li> <li>Full-length hidden piano hinge for extra strength</li> <li>Removable tool tray in crossover styles</li> <li>Built-in divider for convenience and strength</li> <li>.072 aluminum thickness</li> </ul>	



**Crossovers**



**Crossovers**



**Side Mounts**



**RED LABEL TOOL BOX** **\*See chart (pg. 26)**

<b>MATERIAL</b>	Aluminum
<b>FINISHES</b>	Textured Black, Gloss Black, Brite-Tread
<b>DETAILS</b>	
<ul style="list-style-type: none"> <li>.056 aluminum thickness</li> <li>Double v-pan lid stiffener creates strength and rigidity</li> <li>The closed cell foam gasket keeps out the elements</li> <li>Adjustable striker for a tight seal</li> <li>Added security with lockable paddle or pull handle</li> <li>Full length hidden piano hinge for extra strength</li> <li>Removable tool tray in crossover styles</li> </ul>	



**HARDWARE TOOL BOX** **\*See chart (pg. 26)**

<b>MATERIAL</b>	Steel
<b>FINISHES</b>	Textured Black, Textured White
<b>DETAILS</b>	
<ul style="list-style-type: none"> <li>Storage products built with the contractor in mind but versatile enough for the rest of us</li> <li>Sturdy 20-gauge steel</li> <li>NRT™ corrosion resistant powder coating</li> <li>Paddle handle latches and adjustable strikers</li> <li>Full-length piano hinge for extra strength</li> <li>Closed cell foam gasket</li> </ul>	



**Crossovers**



**Chests**



**Side Mounts**



**Crossovers**



**Chests**



**Side Mounts**



### POLY CROSSOVER TOOL BOX

Mid-size	DZ6163P
Full-size	DZ6170P
DETAILS	
<ul style="list-style-type: none"> <li>• Combines the functionality of a crossover box with the benefits of a poly plastic container</li> <li>• Features a full-length locking rod that engages strikers built into the lid</li> <li>• Single cam lock secures the lid tightly</li> <li>• Overlapping lid deflects water</li> <li>• Double-walled lid for extra support</li> <li>• Installation bracket included</li> </ul>	



### POLY TRIANGLE TRAILER BOX DZ91717P

DETAILS	
<ul style="list-style-type: none"> <li>• Rigid poly plastic frame resists warping</li> <li>• Lightweight yet solid construction</li> <li>• Double wall lid for extra support</li> <li>• Perfect fitment for trailer tongues</li> <li>• Steel hasp provides security <b>*Padlock not included</b></li> </ul> <p><b>*Dimensions: Back-36", Front-18", Width-19.5", Height-18"</b></p>	



### SMALL POLY CHEST DZ6535P

DETAILS	
<ul style="list-style-type: none"> <li>• Fits great in SUV's</li> <li>• Molded locking tabs*</li> <li>• Double wall lid for extra support</li> </ul> <p><b>*Dimensions: 35" x 14" x 13"</b></p> <p><b>*Padlock not included</b></p>	



### LARGE POLY CHEST DZ6537P

DETAILS	
<ul style="list-style-type: none"> <li>• Lightweight universal storage wherever you need it</li> <li>• Molded locking tabs*</li> <li>• Double wall lid for extra support</li> </ul> <p><b>*Dimensions: 39" x 27" x 17"</b></p> <p><b>*Padlock not included</b></p>	



### POLY WHEEL WELL BOX DZ95P

DETAILS	
<ul style="list-style-type: none"> <li>• Fits behind the truck wheel well</li> <li>• Lid easily reverses for driver or passenger side installation</li> <li>• Sturdy full-length hinge</li> <li>• Lockable lift-up lid</li> </ul>	



BLUE LABEL		BRITE-TREAD		GLOSS BLACK		TEXTURED BLACK		L	W	H	L1	W1	H1	W2	H2	Vol.
<b>CROSSOVERS</b>																
STANDARD		DZ9170		DZ9170B		DZ9170TB		69.75"	19.875"	17.5"	60.75"	-	12.5"	-	5"	12.8 cu. ft.
LOW PROFILE		DZ9170L		DZ9170LB		-		69.75"	19.875"	17.5"	60.75"	-	12.5"	-	5"	12.5 cu. ft.
<b>SIDE MOUNTS</b>																
48" SIDE MOUNT		DZ9748		DZ9748B		-		48"	14.25"	11"	-	10"	5"	4.25"	5"	3.75 cu. ft.
68" SIDE MOUNT		DZ9768		DZ9768B		-		68"	14.25"	11"	-	10"	5"	4.25"	5"	5.3 cu. ft.
RED LABEL	HANDLE	BRITE-TREAD	GLOSS BLACK	TEXTURED BLACK	WHITE STEEL	BLACK STEEL		L	W	H	L1	W1	H1	W2	H2	Vol.
<b>CROSSOVER</b>																
STANDARD	PADDLE	DZ8170	DZ8170B	DZ8170TB	DZ8170S	DZ8170SB		69.75"	20"	12.2"	60.75"	17.125"	7.2"	1.44"	6"	8.4 cu. ft.
	PULL	DZ10170	-	DZ10170TB												
MID-SIZE STANDARD	PADDLE	DZ8163	DZ8163B	-	DZ8163S	DZ8163SB		63"	20"	12.2"	54"	17.125"	7.2"	1.44"	6"	7.4 cu. ft.
DEEP	PADDLE	DZ8170D	DZ8170DB	-	-	-		69.75"	20"	18.25"	60.75"	17.125"	13.25	1.44"	6"	12 cu. ft.
LOW-PROFILE	PADDLE	DZ8170L	DZ8170LB	DZ8170LTB	-	-		69.75"	20"	12.2"	60.75"	17.125"	11.2"	1.44"	2"	8 cu. ft.
	PULL	DZ10170L	-	DZ10170LTB	-	-										
DOUBLE-LID	PADDLE	DZ8370	DZ8370B	-	-	DZ8370SB		69.75"	20"	12.2"	60.75"	17.125"	7.2"	1.44"	6"	8.4 cu. ft.
	PULL	-	-	DZ10370TB	-	-										
MID-SIZE DOUBLE-LID	PADDLE	DZ8363	-	-	-	-		63"	20"	12.2"	54"	17.125"	7.2"	1.44"	6"	7.4 cu. ft.
<b>CHESTS</b>																
SMALL CHEST	PADDLE	DZ8537	DZ8537B	-	-	-		37.125"	19"	16"	-	-	13.1"	2.4"	3.9"	6.4 cu. ft.
MID SIZED CHEST	PADDLE	DZ8546	DZ8546B	DZ8546TB	DZ8546S	DZ8546SB		46.5"	19"	16"	-	16.6"	13.1"	2.4"	3.9"	8 cu. ft.
STANDARD CHEST	PADDLE	DZ8556F	DZ8556FB	-	DZ8556FS	DZ8556FSB		56"	19"	16"	-	16.6"	13.1"	2.4"	3.9"	9.8 cu. ft.
SLANTED CHEST	PADDLE	DZ8556	DZ8556B	-	-	-		56"	19"	16"	-	12.375"	13.1"	6.625"	3.9"	8.9 cu. ft.
WIDE CHEST	PADDLE	DZ8560W	DZ8560WB	-	-	-		60"	24"	18.1"	-	-	15.4"	2.4"	3.9"	14.9 cu. ft.
LOW PRO CHEST	PADDLE	-	-	DZ8554LTB	-	-		54"	11.5"	8.5"	-	10"	5.6"	1.44"	2.9"	3 cu. ft.
<b>SIDE MOUNTS</b>																
48" SIDE MOUNT	PADDLE	DZ8748	-	-	DZ8748S	DZ8748SB		48"	12.75"	10"	-	8.5"	6"	4.25"	5"	3 cu. ft.
60" SIDE MOUNT	PADDLE	DZ8760	-	-	DZ8760S	DZ8760SB		60"	12.75"	10"	-	8.5"	6"	4.25"	5"	3.7 cu. ft.
68" SIDE MOUNT	PADDLE	DZ8768	-	-	-	-		68"	12.75"	10"	-	8.5"	6"	4.25"	5"	5.1 cu. ft.
POLY TOOL BOXES			PART #					L	W	H	L1	H2	Vol.			
<b>CROSSOVER</b>																
MID-SIZE CROSSOVER		DZ6163P					63"	14.75"	14.37"	54"	-		5.4 cu. ft.			
STANDARD CROSSOVER		DZ6170P					70.5"	14.75"	14.37"	60.5"	-		6.2 cu. ft.			
<b>CHESTS</b>																
SMALL CHEST		DZ6535P					35"	14"	13"	-	-		3.6 cu. ft.			
LARGE CHEST		DZ6537P					39"	27"	17"	-	-		10.35 cu. ft.			
<b>SPECIALTY BOXES</b>																
TRIANGLE TRAILER BOX		DZ9171P					36" (back)	18.75"	18"	18" (front)	-		6 cu. ft.			
WHEEL WELL BOX		DZ95P					37"	7.75"	19.5"	14"	8.5"		2.2 cu. ft.			



**5 DRAWER WHEEL WELL BOX** \*See chart (pg. 30)

<b>MATERIAL</b>	Aluminum, Steel
<b>FINISHES</b>	Textured Black-Tread, Brite-Tread
<b>DETAILS</b>	
<ul style="list-style-type: none"> <li>• 5 drawers with single door opening and cam lock</li> <li>• Quick release mounting plate for easy removal</li> <li>• Steel constructed drawers with guide rails for smooth operation</li> </ul>	



**WHEEL WELL BOX** \*See chart (pg. 30)

<b>MATERIAL</b>	Aluminum
<b>FINISHES</b>	Gloss Black, Brite-Tread
<b>DETAILS</b>	
<ul style="list-style-type: none"> <li>• Lockable storage behind wheel wells</li> <li>• Lift-up lid with a sturdy piano hinge</li> <li>• Fits full size trucks with 6' and 8' beds</li> <li>• Available in Brite-Tread aluminum and gloss black powder coat finish</li> </ul>	



**ANGLED TOPSIDER TOOL BOX** \*See chart (pg. 30)

<b>MATERIAL</b>	Aluminum
<b>FINISHES</b>	Textured Black-Tread
<b>DETAILS</b>	
<ul style="list-style-type: none"> <li>• Storage for the top rail of the truck bed</li> <li>• Textured black powder coat finish</li> <li>• Lockable stainless steel T-handle latch</li> <li>• Shock raises the door up and out of the way for easy access</li> <li>• Angled design for a more sleek look</li> <li>• Water resistant C-channel and bulb seal to help keep the elements out</li> </ul>	



**TOPSIDER TOOL BOX** \*See chart (pg. 30)

<b>MATERIAL</b>	Aluminum
<b>FINISHES</b>	Brite-Tread
<b>DETAILS</b>	
<ul style="list-style-type: none"> <li>• Storage for the top rail of the truck bed</li> <li>• Lockable stainless steel T-handle latch</li> <li>• Open the door from the top or bottom with our new design</li> <li>• Shock raises the door up and out of the way for easy access</li> <li>• Safety chains to support the door when down</li> <li>• Water resistant c-channel and bulb seal</li> <li>• All mounting hardware included</li> </ul>	



**TRIANGLE TOOL BOX** \*See chart (pg. 30)

<b>MATERIAL</b>	Aluminum
<b>FINISHES</b>	Brite-Tread
<b>DETAILS</b>	
<ul style="list-style-type: none"> <li>• Constructed of strong .056 aluminum for rugged use</li> <li>• Lockable paddle handle</li> <li>• Gas shock to support the lid (<b>only on DZ91717 and DZ92716</b>)</li> <li>• Great for trailer tongue storage</li> </ul>	



**NARROW TOOL BOX** \*See chart (pg. 30)

<b>MATERIAL</b>	Aluminum
<b>FINISHES</b>	Brite-Tread, Gloss Black
<b>DETAILS</b>	
<ul style="list-style-type: none"> <li>• Narrow profile design fits great for today's short bed trucks</li> <li>• Lockable paddle handles, gas shocks, and foam gasket to keep the elements out</li> <li>• Available in Brite-Tread aluminum and gloss black powder coat finish</li> </ul>	



**UNDERBED TOOL BOX** \*See chart (pg. 30)

<b>MATERIAL</b>	Aluminum, Steel
<b>FINISHES</b>	Brite-Tread, Textured Black-Tread, Gloss Black
<b>DETAILS</b>	
<ul style="list-style-type: none"> <li>• Water-channel and bulb seal help keep out water</li> <li>• T-handle creates a tight barrier when closed</li> <li>• Take 4.5" from length &amp; height to get opening dimensions</li> <li>• Mounting brackets sold separately</li> </ul>	



**UNDERBED MOUNTING BRACKETS DB-2502**

<b>MATERIAL</b>	Steel
<b>FINISHES</b>	Gloss Black
<b>DETAILS</b>	
<ul style="list-style-type: none"> <li>• Securely mount underbed boxes</li> <li>• Heavy duty welded steel construction</li> <li>• Sold in pairs</li> <li>• Required for underbed installation</li> <li>• <b>18" H x 2" W x 18" H</b></li> </ul>	

WHEEL WELL TOOL BOXES												
STYLE	STEEL	POLY	BRITE-TREAD	GLOSS BLACK		L	W	H	L1	H2	Vol.	
<b>DRAWER WHEEL WELLS</b>												
BLACK POWDER COATED STEEL	DZ95D	-	-	-		20.5"	8.5"	18.875"	-	-	1.9 cu. ft.	
BRITE-TREAD ALUMINUM BODY	-	-	DZ95DA	-		20.5"	8.5"	18.875"	-	-	1.9 cu. ft.	
<b>WHEEL WELLS</b>												
DRIVER SIDE (ALUMINUM)	-	-	DZ94	DZ94B		37"	7.75"	19.5"	14"	8.5"	2.2 cu. ft.	
PASSENGER SIDE (ALUMINUM)	-	-	DZ95	DZ95B		37"	7.75"	19.5"	14"	8.5"	2.2 cu. ft.	
REVERSIBLE POLY	-	DZ95P	-	-		37"	7.75"	19.5"	14"	8.5"	2.2 cu. ft.	
<b>SPECIALTY TOOL BOXES</b>												
STYLE	BRITE-TREAD	GLOSS BLACK	TEXTURED BLACK			L	W	H	L1	H1	H2	Vol.
<b>NARROW BOXES</b>												
MID-SIZE	DZ6163N	DZ6163NB	-			63"	14"	14.25"	53.5"	9.25"	5"	5 cu. ft.
FULL-SIZE	DZ6170N	DZ6170NB	-			69.75"	12"	14.25"	60.75"	9.25"	5"	5.75 cu. ft.
<b>ATV BOXES</b>												
SMALL	-	M206	-			35"	12"	9"	-	-	-	2 cu. ft.
LARGE	-	M207	-			35"	12"	12.5"	-	-	-	3 cu. ft.
<b>TRIANGLE TRAILER</b>												
SMALL ALUMINUM	DZ92716	-	-			34" (back)	14.25"	18"	16" (front)	-	-	3.71 cu. ft.
LARGE ALUMINUM	DZ92717	-	-			34" (back)	19"	22.75"	20.75" (front)	-	-	7.24 cu. ft.
LOW PROFILE 1	DZ92716	-	-			40.75" (back)	16.75"	9.25"	16.5" (front)	-	-	2.65 cu. ft.
LOW PROFILE 2	DZ92717	-	-			32.8" (back)	24.5"	8.25"	20.8" (front)	-	-	3 cu. ft.
POLY	-	DZ91717P	-			37"		19.5"	10"	14"	8.5"	2.2 cu. ft.
<b>TOPSIDER TOOL BOXES</b>												
BRITE-TREAD	TEXTURED BLACK					L	W	H			Vol.	
DZ70	-	-	-			48"	12"	16"			5.33 cu. ft.	
DZ59	-	-	-			60"	15.5"	20"			10.75 cu. ft.	
DZ79	-	-	-			72"	15.5"	20"			12.75 cu. ft.	
DZ71	-	-	-			90"	15.5"	20"			16 cu. ft.	
DZ67	-	-	-			96"	15.5"	20"			17.22 cu. ft.	
-	DZ81TB	-	-			50"	12.125"	16.144			5.3 cu. ft.	
<b>ALUMINUM UNDERBEDS</b>						<b>STEEL UNDERBEDS</b>						
BRITE-TREAD	TEXTURED BLACK	L	W	H	Vol.	BLACK STEEL	L	W	H	Vol.		
DZ61	DZ61TB	24"	18"	18"	4.5 cu. ft.	DB-2600	24"	18"	18"	4.5 cu. ft.		
DZ74	-	30"	20"	18"	5.94 cu. ft.	DB-2601	36"	18"	18"	6.75 cu. ft.		
DZ77	DZ77TB	36"	20"	18"	7 cu. ft.	DB-2602	48"	18"	18"	9 cu. ft.		
DZ75	DZ75TB	48"	20"	18"	9.5 cu. ft.	DB-2604	60"	18"	18"	11.25 cu. ft.		



Dee Zee Transfer Tanks Are Made In The United States



### TRANSFER TANK \*See chart (pg. 34)

<b>MATERIAL</b>	Aluminum, Steel
<b>FINISHES</b>	Brite-Tread, Black-Tread, White Steel, Black Steel
<b>DETAILS</b>	
<ul style="list-style-type: none"> <li>• Internal baffles control flow of liquid and adds strength</li> <li>• Mounting tabs secure your tank to truck bed</li> <li>• Drain plugs allow for draining the tank by gravity</li> <li>• Lockable breathing cap reduces pressure &amp; eliminates the vacuum when pumping</li> </ul>	
<b>*Available in: Rectangle, Square, Combo, or L-shaped</b>	

### AUXILIARY TANK \*See chart (pg. 34)

<b>MATERIAL</b>	Aluminum, Steel
<b>FINISHES</b>	Brite-Tread, Black-Tread, White Steel, Black Steel
<b>DETAILS</b>	
<b>Upgrade your tank to feed diesel fuel directly into your fuel line</b>	
<ul style="list-style-type: none"> <li>• Meets Federal DOT requirements for UN31A and UN31B tanks</li> <li>• Larger, full-size internal baffles are fully welded for added strength</li> <li>• Hydrostatically pressure tested to 29 PSI: Federal Regulation 178.814</li> <li>• Auxiliary connector kits sold separately (<i>see right</i>)</li> </ul>	

### COMBO TANK \*See chart (pg. 34)

<b>MATERIAL</b>	Aluminum, Steel
<b>FINISHES</b>	Brite-Tread, Black-Tread, White Steel, Black Steel
<b>DETAILS</b>	
<ul style="list-style-type: none"> <li>• The convenience of a Utility Chest mounted to a Transfer Tank</li> <li>• Red Label Utility Chest features lockable paddle handles, lid stiffener, and gas shocks (<i>pg. 23</i>)</li> <li>• All standard tanks feature lockable-breathing caps and drain plugs</li> </ul>	

### COMBO TANK WITH PUMP \*See chart (pg. 34)

<b>MATERIAL</b>	Aluminum
<b>FINISHES</b>	Brite-Tread, Black-Tread
<b>DETAILS</b>	
<ul style="list-style-type: none"> <li>• Convenient lockable storage bolted onto a Transfer Tank</li> <li>• Transfer Tank constructed of .125 Brite-Tread aluminum</li> <li>• Utility Chest features .056 Brite-Tread aluminum</li> <li>• 2 stability baffles and drain plug</li> <li>• Comes with a 15 GPM pump mounted inside of the tool box</li> </ul>	



### GAS CAPS

<b>1</b>	<ul style="list-style-type: none"> <li>• Vented cap and neck for transfer tanks</li> <li>• Use padlock for extra security</li> <li><b>*Padlock not included</b></li> </ul>	DZGASCAP
<b>2</b>	<ul style="list-style-type: none"> <li>• Replacement vented cap only</li> <li>• Use padlock for extra security <b>*not included</b></li> <li><b>*Does not include threaded neck</b></li> </ul>	DZGASCAP2
<b>3</b>	<ul style="list-style-type: none"> <li>• Built-in lock, vented cap, and neck for transfer tanks</li> <li><b>*Lock &amp; keys included</b></li> </ul>	DZGASCAP3



### CONNECTOR KITS

<b>DETAILS</b>	
<ul style="list-style-type: none"> <li>• Feed diesel directly into your fuel line</li> <li>• All hoses and hardware included; some cutting required to OEM fuel hose</li> <li>• Not designed for continuous flow</li> <li>• Valve must be closed during vehicle operation</li> </ul>	

**#DZ97960**  
 2011+ Chevrolet/GMC  
 99-12 Dodge  
 1999+ Ford  
 2016+ Nissan Titan XD

**#DZ97961**  
 99-10 Chevrolet/GMC  
  
**#DZ97962**  
 2013+ Dodge



### BUILD YOUR OWN COMBO

Mix and match colors and finishes of Red Label Utility Chests (*pg. 23*) and L-shaped tanks to create your own custom combo tank using **DZBKTCOMBO**



**47" BASE**  
**DZ8546(B)(S)(SB) + DZ92747(B)(S)(SB)**



**OR**

**56" BASE**  
**DZ8556F(B)(S)(SB) + DZ92756(B)(S)(SB)**



TRANSFER TANKS													
STYLE	BRITE-TREAD ALUMINUM	BLACK-TREAD ALUMINUM	WHITE STEEL	BLACK STEEL		L	W	H	W1	H1	W2	H2	Vol.
<b>RECTANGLE + SQUARE</b>													
WEDGE	DZ92556	DZ92556B	-	-		56"	20"	20"	8.3"	8.3"	-	-	76.2 gal.
SQUARE	DZ91750	-	DZ91750S	DZ91750SB		24"	24"	24"	-	-	-	-	55 gal.
NARROW RECTANGLE	DZ92556N	DZ92556NB	DZ92556NS	DZ92556NSB		56"	9.625"	19"	-	-	-	-	40 gal.
HIGH-CAPACITY RECTANGLE	DZ91753	-	DZ91753S	DZ91753SB		48"	24"	24"	-	-	-	-	108 gal.
<b>L-SHAPED</b>													
23" BASE	-	-	DZ92754S	DZ92754SB		23"	31"	24"	10"	8"	21"	16"	45 gal.
48" BASE	DZ92747	DZ92747B	DZ92747S	DZ92747SB		46.75"	32.75"	25.5"	13"	7.75"	19.75"	17.75"	92 gal.
56" BASE	DZ92756	DZ92756B	DZ92756S	DZ92756SB		56"	32.75"	25.5"	13"	7.75"	19.75"	17.75"	111 gal.
<b>COMBO TANK + TOOL CHEST</b>													
48" BASE HIGH-CAPACITY	DZ92647	DZ92647B	-	DZ927647SB		46.75"	32.75"	25.5"	13"	7.75"	19"	16"	92 gal.
54" BASE	-	-	-	DZ91740SB		54"	18"	20"	9"	6.5"	11.5"	12.5"	50 gal.
54" BASE LOW-PROFILE	DZ92740	DZ92740B	-	-		54"	18"	16"	9"	6.5"	11.5"	7"	43 gal.
56" BASE HIGH-CAPACITY	DZ92656	DZ92656B	-	DZ92656SB		56.25"	32.75"	25.5"	13"	7.75"	19"	16"	111 gal.
<b>COMBO TANK + PUMP</b>													
48" COMBO	DZ92847	DZ92847TB	-	-		46.75"	30"	24"	-	11"	-	13"	62 gal.
56" COMBO	DZ92856	DZ92856TB	-	-		56.25"	30"	24"	-	11"	-	13"	75 gal.
<b>AUXILIARY TRANSFER TANK</b>													
STYLE	BRITE-TREAD ALUMINUM	BLACK-TREAD ALUMINUM	WHITE STEEL	BLACK STEEL		L	W	H	W1	H1	W2	H2	Vol.
<b>RECTANGLE</b>													
LONG RECTANGLE	DZ91752X	-	-	-		60"	9"	19"	-	-	-	-	40 gal.
HIGH-CAPACITY RECTANGLE	DZ91753X	-	-	DZ91753XSB		48"	24"	24"	-	-	-	-	108 gal.
<b>L-SHAPED</b>													
48" BASE	DZ92747X	DZ92747XB	DZ92747XS	DZ92747XSB		46.75"	32.75"	25.5"	13"	7.75"	19.75"	17.75"	92 gal.
<b>COMBO TANK + TOOL CHEST</b>													
48" BASE	-	DZ92647XB	-	DZ92647XSB		46.75"	32.75"	25.5"	13"	7.75"	19.75"	17.75"	92 gal.
54" BASE LOW-PROFILE	-	DZ92740XB	-	-		54"	18"	16"	6.5"	9"	11.5"	7"	43 gal.



### ATV TOOL BOX

Small 35" x 12" x 9"	M206
Large 35" x 12" x 12.5"	M207
<b>DETAILS</b>	
<ul style="list-style-type: none"> <li>• Great for universal storage</li> <li>• Gloss black powder coat finish</li> <li>• ATV mounting hardware included</li> </ul>	

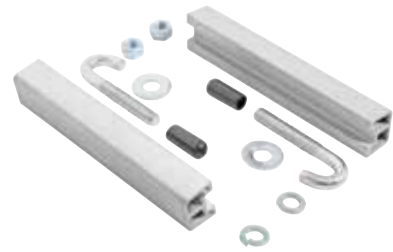
### TOOL BOX MOUNTING KIT DZ97904

<b>DETAILS</b>
<ul style="list-style-type: none"> <li>• Premium mounting kit</li> <li>• Replaces standard J-bolt</li> <li><b>*Not recommended for Ford Aluminum Beds</b></li> </ul>



### TOOL BOX MOUNTING KIT DZ97910

<b>DETAILS</b>
<ul style="list-style-type: none"> <li>• Ford aluminum bed premium mounting kit</li> <li>• Custom-designed for secure fit</li> </ul>



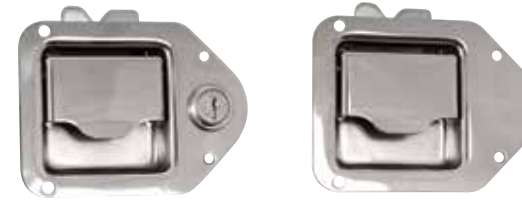
### GRIP TAPE DZ46

<b>DETAILS</b>
<ul style="list-style-type: none"> <li>• 2-11/16" x 12' black adhesive tape</li> <li>• Use it anywhere for a non-slip surface</li> </ul>



### TOOL BOX SHOCKS

DZTBSHOCK1	10.5" 80 lbs. Shock • ball & socket mount
DZTBSHOCK2	10" 70 lbs. Shock • blade/eyelet mount
DZTBSHOCK3	10.5" 60 lbs. Shock • ball & socket mount
DZTBSHOCK4	10.875" 40 lbs. Shock • ball & socket mount



### TOOL BOX LATCH & LOCKS

• Locking-hook style latch <b>*Lock and keys included</b>	DZTBLATCH1
• Black locking-hook style latch <b>*Lock and keys included</b>	DZTBLATCH1B
• Non-locking hook style latch	DZTBLATCH2
• Locking-post style latch <b>*Lock and keys included</b>	DZTBLATCH3
• Replacement lock cylinder with pair of keys	DZTBLOCK1
<b>DETAILS</b>	
<ul style="list-style-type: none"> <li>• Replace worn out latches or locks</li> <li>• Comes with keys, a weather resistant gasket, and rivets for installation</li> <li>• 3 latching styles to choose from</li> <li>• Stainless steel finish</li> <li><b>*Sold Individually</b></li> </ul>	

### TOOL BOX PULL HANDLE

Stainless Steel	• Locking • post style latch <b>*Lock and keys included</b>	DZTBLATCH4
Black Powder Coat	• Locking • post style latch <b>*Lock and keys included</b>	DZTBLATCH4B
<b>DETAILS</b>		
<ul style="list-style-type: none"> <li>• Replace worn out pull handle latches</li> <li>• Comes with keys, a weather resistant gasket, and rivets for installation</li> </ul>		



### TOOL BOX STRIKER

Striker/lid catch for post style latches	DZTBSTRIKER
Striker/lid catch for hook style latches	DZTBSTRIKER2
<b>DETAILS</b>	
<ul style="list-style-type: none"> <li>• Replacement lid strikers for Dee Zee's "post style" latches</li> <li>• Self-adjusting design ensures secure latching and closing</li> </ul>	



2pk with rivets

### TRAYS & MATS

• Molded plastic tool box tray • 10 lbs. weight limit	DZTBTRAY1
by Zerust® vapor shield • 70" x 20" • .042 thickness	DZTBMAT2





Support Local



High Quality,  
American Made  
Products Since 1977

Dee Zee, Inc. will manufacture the highest quality products for our customers through innovation, teamwork, and continuous improvement. Should the original purchaser experience manufacturer defects in materials or workmanship under normal use, Dee Zee, Inc., hereinafter referred to as 'Dee Zee', offers the below warranty coverage. This warranty statement supersedes all previous versions in Dee Zee catalogs or other marketing materials, effective January 1st, 2025.

This warranty applies only to the original purchaser of new Dee Zee product(s) from an authorized reseller, and it is limited to the replacement of genuine Dee Zee products. Warranty does not include electrical components, installation, cost of removal, time, labor, transportation costs, loss of use, inconvenience, or consequential damages. This warranty terminates if the original purchaser transfers the Dee Zee product to any other person.

Modification of any kind to Dee Zee products voids all warranty coverage. Damage resulting from road hazards such as gravel or other debris, product misuse, improper installation, impairments from accidents, product modifications, improper repairs, spills, vandalism, product neglect, lack of maintenance, neglecting cleaning instructions, corrosion or damage related to environmental conditions, or acts of God are not covered under this warranty agreement.

### WARRANTY COVERAGE - MATERIALS & WORKMANSHIP

#### LIMITED LIFETIME WARRANTY:

- STAINLESS STEEL: Side Steps and Side Rails
- ALUMINUM: Side Steps, Running Boards, Storage Boxes, Transfer Tanks, Bed Caps, Guardian Tonneau Cover, Platform Racks, Cargo Carriers, Cab Racks, Hex Series, and Invis-A-Rack
- POLY PLASTIC: Storage Boxes

#### THREE-YEAR WARRANTY:

- POWDER-COATED / E-COATED STEEL: Side Steps, Running Boards, Storage Boxes, Transfer Tanks, Sport Bar, Ladder Racks, Cargo Trays, Under Seat Storage Drawer, Tonneau Drawer, and Cargo Slides
- MOUNTING BRACKETS: Brackets for the installation of Side Steps/ Running Boards, including but not limited to, Apex, NXt, NXc, 6", Rough Step, Louvered, Hex Series, and Molded Board Underbed Boxes
- UNCATEGORIZED: Tailgate Assist, Bed Mats, Floor Mats, Mud Flaps, Tailgate Board, Hood Deletes, Fender Deletes, Hinge Covers, Auxiliary Fuel Connection Kits, Tie Down Anchors, and ALL products not otherwise listed individually

#### Warranty Coverage - Finish Protection

The finish of all Dee Zee products is covered for one-year (1) from the date of purchase. Dee Zee products have a high-quality finish that must be cared for and maintained like any other exposed finish on the vehicle. Finish defects stemming from scratches, dents, product damage or misuse do not qualify for warranty protection. Protect the finish with non-abrasive automotive wax (e.g. Pure Carnauba) on a regular basis. Applying soaps, polishes, or waxes that contain an abrasive compound may scratch the finish and leave the exposed material susceptible to corrosion.

#### Warranty Coverage - Component Parts

Operational items such as shocks, latches, hinges, and other wear items including, but not limited to, mud flaps, step pads, toolbox tray, end caps,

hardware, gaskets, seals, etc. have a one-year (1) warranty. Replacement parts are non-returnable and non-refundable. The majority of tool box component parts and nerf bar step pads can be ordered on [www.deezee.com](http://www.deezee.com). If you cannot locate the replacement part you need, please call 1-800-779-2102 to order by credit card.

Replacement keys are fulfilled by a third-party vendor. They can be ordered at [www.easykeys.com/dee-zee](http://www.easykeys.com/dee-zee). The key code can be located on the front of the lock cylinder. Eberhard lock cylinders are typically used if Dee Zee is not listed by name in the drop-down menus. If you do not see your key code, enter the key code in the search bar.

#### GPI® Fuel Pumps and Accessories

All Great Plains Industries (GPI®) products Dee Zee sells are covered by the manufacturer and their policies. To submit a warranty claim for fuel pumps and meters, contact GPI® directly at 1-800-835-0113 or visit [www.gpi.net](http://www.gpi.net).

#### Warranty Submission Procedure

Warranty claims must be processed through the place of purchase. The original purchaser is required to provide the original sales receipt with the purchase date clearly visible, along with photographs of the defect. The store will handle the warranty evaluation and resolution. If you should experience any issues with the process, please contact us at [returns@deezee.com](mailto:returns@deezee.com) for further assistance.

In the event the product style purchased originally is no longer available, Dee Zee will warranty the defective part with a current equivalent. If a comparable product is no longer available, the product would be returned to the store of purchase for a refund, or the applicable cost difference can be paid to select an alternate style.

#### Disclaimers

Dee Zee retains the right to determine to its reasonable satisfaction whether any claimed defect is covered under warranty and within the expected lifetime of the product and vehicle use. Buyer assumes all risk, liability, and cost for the installation and use of Dee Zee products. Dee Zee assumes no liability for injury, loss, incidental or consequential damages in the event of an accident.

All products are sold as appearance accessories and should not be relied upon as protection for the vehicle or its occupants in the event of an accident. Vehicles equipped with a supplemental restraint system (SRS) or airbags deployed by impact and collision avoidance systems should not be modified in any way. Always consult the vehicle manufacturer if you have any questions regarding supplemental restraint systems and proximity sensors.

Buyer must accommodate front and rear sensors during product installation and assumes all risk should these be tampered, rerouted, severed, or disconnected. This includes disabling visual, audio, or vibration alerts into the cab. Buyer assumes all risk and responsibility for wiring any supplemental auxiliary lights.

#### California Proposition 65

WARNING: Operating, servicing, and maintaining a passenger vehicle can expose you to chemicals such as lead, phthalates, engine exhaust, and carbon monoxide that are known to the State of California to cause cancer and birth defects or other reproductive harm. To minimize exposure, service your vehicle and its accessories in a well-vented area and wear gloves or wash your hands frequently. For more information visit: <https://www.p65warnings.ca.gov/>