



BOUCHON VENTILÉ
BREATHER CAP
#HBF12



FILTRE DE RETOUR
OIL FILTER
#HFA11015

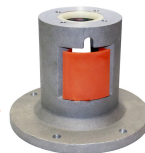


MOTEUR À ESSENCE
GASOLINE MOTOR

- #M70 (7 HP)
- #M9 (9 HP)
- #M13 (13 HP)
- #M9H (9 HP)
- #M13H (13 HP)



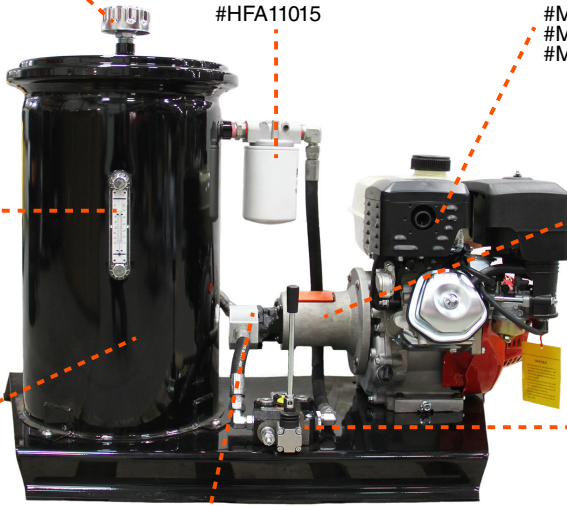
INDICATEUR
GAUGE OIL LEVER
#LDR04



SUPPORT D'ACCOUPLMENT
BRACKET
#89936996 (7 HP)
#89936998 (9 HP)



RÉSERVOIR
TANK
#HYR35L (10 GALLONS)



POMPE
PUMP
#82740499



CONTRÔLE DIRECTIONNEL
VALVE CONTROL
#MD1516
#MD1516S