

INSTALLATION MANUAL

60627

Level of Difficulty

Easy

Weight Capacity

Gross trailer weight (GTW)	38,000 lbs.
Vertical load	9,500 lbs.

Parts List

Item	Qty	Description
1	1	Gooseneck ball, 2-5/16"

Tools Required

None

Maintenance

When the gooseneck ball is not in use, remove it from the receiver tube and store in a case or a dry, clean area.

Keep the gooseneck ball and towing system lubricated regularly. Use silicone spray or equivalent to prevent wear and rust.

Place a rubber cover into the gooseneck receiver when the ball is removed to keep dirt and debris out.

Failure to maintain the towing system could result in poor performance and / or failure.

Product Registration

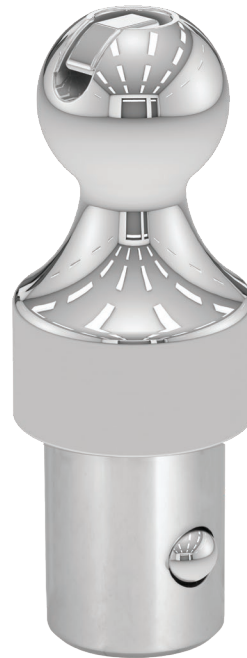
CURT Group stands behind our products with industry-leading warranties. Provide feedback and help us to improve our products by registering your purchase at: warranty.curtgroup.com/surveys

⚠ WARNING

Never exceed the vehicle manufacturer's recommended towing capacity.

Vehicle performance (braking, handling, acceleration, turning radius) can be drastically affected by a trailer. Allow additional time and space for stopping, changing lanes, passing and turning.

Product Photo



⚠ CAUTION

Severe bumps can damage the towing system. Avoid or drive slowly over rough terrain.

Do not tow more than one trailer at a time. This may cause loss of control.

NOTICE

Before you begin installation, read all instructions thoroughly.

Step 1

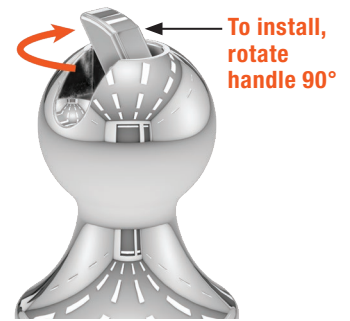
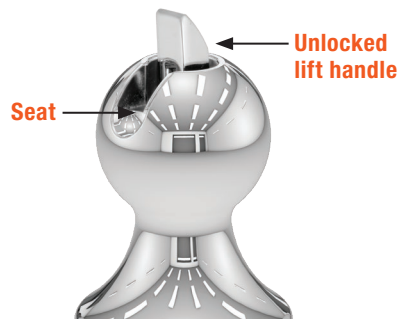
To install the gooseneck ball, lift the handle on top of the ball from its seat and rotate 90°.

Insert the gooseneck ball into the truck bed puck system receiver tube. Rotate the lift handle to the locked position and flip it down into its seat.

If the lift handle does not freely rotate into the locked position, rotate the ball while applying light pressure to the side of the lift handle. When the lift handle rotates into the locked position, flip it down into the seated position.

When the gooseneck ball is not in use, remove it from the receiver tube and store in a case or a dry, clean area.

Place a rubber cover into the gooseneck receiver when the ball is removed to keep dirt and debris out.



TOWING TIPS

Towing Tips

Driving a tow vehicle	Verify adequate turning clearance between the truck cab / box corners and trailer(s). Verify the trailer safety chain length. Too much slack in the chain may prevent maintaining control in the event of separation. Leave only enough slack to allow full turning without interference.
Check your equipment	Periodically check the condition of all towing equipment. Ensure all fasteners are tight and that all structural components are sound. Do not tow a trailer with worn or damaged parts. Attach trailer securely to safety chain anchors. Check truck box clearance. There should be a minimum clearance of 6" between the bottom of the trailer's overhang and the top of the box sides.
Trailer loading	Proper trailer loading is very important. Heavy items should be placed close to the floor near the trailer axle center line. The load should be balanced side to side and firmly secured in the trailer to prevent shifting. Tongue weight should be 10-15% of the gross trailer weight for most trailers. Too low of a tongue weight often produces tendency to sway. Never load the trailer heavier behind the trailer axle(s).
Towing vehicle and trailer manufacturer's recommendations	Review the owner's manual for your towing vehicle and trailer for specific recommendations, capacities and requirements.
Trailer lights, turn signals and electric brakes	Verify trailer lights, electric brakes and breakaway switches are working properly.
Tire inflation	Unless specified by the towing vehicle or trailer manufacturer, tires should be inflated to their maximum recommended pressure.